



Tertiary Scholarships  
& Loans Service  
Empowering Fiji's Future



Service with Excellence  
2013 - 2023



# 2025 Community Awareness Handbook



Tertiary **Scholarships**  
& **Loans** Service

---

Empowering Fiji's Future

## Disclaimer

The content of the Handbook is current at the time of the publication and may be changed from time to time with amendments to Act, regulations and governing policies by the Board, line Minister or the Fiji Government.

The administration of the schemes is governed by TSLS Act, regulations and operational policies of the organisation.

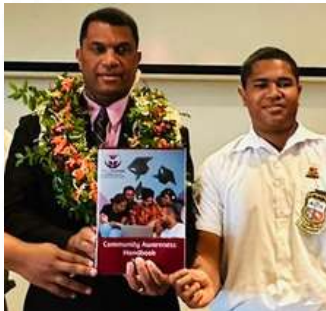
Visit [www.tsls.com.fj](http://www.tsls.com.fj) for most relevant information and the update.



PARTNERSHIP



INCREASED PUBLIC ACCESS



INNOVATIVE POLICIES



CONNECTING EMPLOYERS

## Table of Content

Contents	Page
Governance Hierarchy .....	5
Message from the Hon. Deputy Prime Minister & Minister for Finance .....	6
Foreword by the Hon. Minister for Education .....	7
Message from the Board Chairperson .....	8
Message from the Chief Executive Officer .....	8
About Us .....	9
Organisational Structure .....	10
<b>Executive Summary of Grants, Scholarships &amp; Study Loan.....</b>	<b>11</b>
Grants .....	12
Scholarships .....	13
Study Loan .....	15
<b>TSLs Schemes &amp; Eligibility Criteria.....</b>	<b>17</b>
<b>2.1 Grants .....</b>	<b>18</b>
2.1.1 Micro Qualification/ Competency Based Training Scheme (2500 Grants) .....	19
2.1.2. Graduate Business Start Up Scheme (30 Grants) .....	19
2.1.3. Apprenticeship (500 Grants) .....	19
<b>2.2 Scholarships .....</b>	<b>20</b>
2.2.1 Scholarships for Masters & PhD by Research Scheme - 30 Awards (20 for Masters (15 Local and 5 in New Zealand) and 10 for PhD (7 Local and 3 in New Zealand)) .....	21
2.2.2. Cost Sharing Overseas PhD Scholarships Scheme (20 Awards) .....	22
2.2.3. Scholarships for Merit Based Undergraduate Overseas Scheme (80 Awards) .....	23
2.2.4. Scholarships for Merit Based Postgraduate Diploma / Specialisation In-Service Overseas Scheme (20 Awards) .....	25
2.2.5. Scholarships for Merit Based Higher Education – Level 7 Local Scheme (700 Awards) .....	27
2.2.6. Scholarships for Merit Based Skills Qualifications Scheme (200 Awards) .....	32
2.2.7. Scholarships for Students with Special Needs Scheme (20 Awards) .....	35
2.2.8. Scholarships for In-Service Scheme - 50 Awards Public Sector Organisation .....	36
2.2.9. Scholarships for Higher Education (Level 7 - Degree) With Minimum Cut-Off Mark Scheme (2500 Awards) .....	38
2.2.10. Scholarships for Skills Qualification based on Offer Letter Scheme (2780 Awards) .....	44
2.2.11. Scholarships for Industry/Employer Based Skills Qualification (300 Awards) .....	47
2.2.12. Scholarships for Hardship Assistance Scheme (1000 Awards) .....	49
<b>2.3 Study Loan .....</b>	<b>50</b>
2.3.1. Tuition Only Study Loan for In-Service Scheme (100 Study Loans) .....	51
<b>Know How To Apply .....</b>	<b>52</b>
TSLs Online Application Requirements .....	53
Information on TSLs Online Registration & Application For Scholarships .....	54
Account Creation Flowchart .....	55
Online Application Processing Flowchart .....	55
Student Notice .....	56
<b>Allowance Process and TSLs Account Statement Request .....</b>	<b>57</b>
Allowance Processing Flowchart .....	58
Online Account Statement Request .....	59
<b>Student Learning Enrichment and Work Skills .....</b>	<b>60</b>
Student Learning Enrichment .....	61
Post-Graduation Care .....	62
Employer Connect Portal (ECP) .....	63
Contact TSLs .....	64

# Governance Hierarchy



Deputy Prime Minister & Minister for Finance, Hon. Professor Biman Prasad



Minister for Education, Hon. Aseri Radrodro



Board Chairperson, Ms. Ro Teimumu Kepa



Deputy Board Chairperson, Dr. Penuel Emi



Board Director, Mr. Nilesh Lal



Board Director, Ms. Kirti Patel



Chief Executive Officer, Dr. Hasmukh Lal

## Message from the Hon. Deputy Prime Minister & Minister for Finance, Strategic Planning, National Development and Statistics



*Hon. Professor Biman Prasad*

The Coalition Government is committed to scaling up human capital development and empowering our people with appropriate skills not only to better their lives but contribute positively to economic development. We have forgiven over \$650 million in tertiary student loans benefitting more than 53,000 students and refocused the scholarship schemes to meet our national development needs with a focus on quality and employability.

In 2024-2025 financial year, \$150.5 million is allocated to fund 10,830 new and 9,940 continuing students. This allocation is the highest ever for new intakes. We are adding value to existing schemes either through increased allocations or revising eligibility criteria. The scholarship policies are focused on replacing the loss of skills through migration and meet the demand driven skill sets required by our employers.

The scholarships budget is aligned to the independent findings and recommendations of Review of Scholarship Priority Areas Report and Way Forward Human Capital Development Plan. Fiji needs more specialist and people with higher level qualifications to continue to build intellectual capital in the areas of Medical & Health Services, Engineering, Climate Change, Marine, Forestry, Public Policy and Analysis, Economic Modelling and Policies, Public Financing and Veterinary Science. For this, two new overseas schemes for Ph.D and Masters with Australian universities and Postgraduate Diploma/Specialisation are introduced.

There is a greater focus on building technical skills which has been neglected for some time. Government has introduced a scheme to fund students who undergo studies at employer organisations with accredited programmes and training facilities in technical and vocational areas. The micro qualification grant is expanded to White Good Repairs and micro business owners for marketing and bookkeeping training.

We want to turn our job seekers into job creators. Graduates who studied on Government scholarships will be provided with the opportunity to undergo training and start a business through training and mentoring by Fiji Commerce and Employers Federation.

I look forward to more young people accessing scholarships and grants to develop knowledge and skills to advance socio-economic progress of the country. My best wishes to the recipients.

God Bless Fiji.



## Foreword by the Hon. Minister for Education



*Hon. Aseri Radrodro*

As the Minister for Education, I have much pleasure in presenting the Tertiary Scholarships and Loans Service (TSLs) Community Awareness Handbook for 2024-2025 financial year to the public of Fiji, targeting future recipients of Coalition Government funded scholarship, grant and loan schemes. The Coalition Government is conscious on the imperatives of having a highly trained workforce for all facets of national development and growth.

Investing in human capital is a high priority given increasing global mobility of workers. The Government has allocated \$150.5m in the 2024-2025 national budget. The number of scholarship and grant schemes have increased and this shows innovative thinking to allow more access to students to pursue tertiary studies. This is the progressive steps taken by the Coalition Government towards 2030 Sustainable Development Goal on Quality Education. The diversified schemes allow greater inclusivity, equity and access to potential recipients for studies in the national priority areas. Government will assist private students from second year onwards for degree and diploma level five (5) programmes. The private students need to have 50% pass rate in the first year. This assistance will cover tuition fee and \$2000 allowance.

The intent of this Handbook is to provide all prospective students and the members of the public on twelve (12) schemes of scholarships, one (1) study loan scheme and three (3) schemes of study grants. The Handbook is aimed at disseminating the details of the schemes administered by TSLs with specific information on the eligibility criteria and the number of awards available in 2024-2025 financial year. This Handbook also provides information on application procedure, allowance processing timeline and learning enrichment, and work skills. I urge potential recipients to apply, obtain scholarships, successfully complete and serve our local workforce.

I am confident that stakeholders will find this Handbook as an accessibility to information and for planning and decision making. The digital copy will be readily available which can be easily shared and forwarded on Viber, Messenger, Insta Chat, Twitter, LinkedIn, and WhatsApp channels and community groups.

Vinaka Vakalevu, Dhanyawaad & Thank You.

## Message from the Board Chairperson



*Ms. Ro Teimumu Kepa*

As a transformative organization aspiring to achieve service excellence in administering scholarships, grants and loan scheme, Tertiary Scholarships and Loans Service (“TSLs”) strides to continue its journey in the development of new organizational initiatives and unprecedented public policies that are aligned with the Coalition Government’s plan to increase access to service delivery and to tertiary education studies.

I wish to express my appreciation in the changes to the existing policies, development of new scholarships schemes and amendments made to the TSLs Act of 2014. This is a testament of high intellect thinking, studying trend analysis, listening to professional and public suggestions to plan for continuous improvements.

From Governance perspective, the Board will continue to strengthen accountability and transparency of taxpayer investment into scholarships. There is an obligation on the scholarship recipients and tertiary education institutions to honor. I urge ethical reciprocation from both.

I strongly believe this Handbook will be an effective and efficient guiding tool for scholarship planning purposes which must be shared with all our stakeholders and communities within Fiji.

Vinaka Vakalevu, Dhanyawaad & Thank You.



## Message from the Chief Executive Officer



*Dr. Hasmukh Lal*

The generational change of our core clients require end to end service solution. TSLs continues to make strides in digital transformation and technology enabled business processes to strengthen operational excellence and be more accessible. We are no longer only a scholarship provider but part of sponsored students’ learning journey through continuous engagements, customer experience surveys, learning enrichments and value adding for job opportunities through work skills sessions.

The 2025 to 2030 Strategic Plan will be developed through a consultative process and launched towards the end of 2024 to guide on forward-focused initiatives and milestones. The innovative and diversified scholarships, grants and study loan schemes provide far greater access to youths and adult population to study micro qualifications, vocational programmes, bachelor’s and postgraduate studies till Ph.D. The taxpayers put trust and confidence on recipients to successfully complete and serve our country.

There are various ways to access services from TSLs, both in-person and virtually. This Handbook provides invaluable information to potential recipients to plan properly. The governing ‘Act’, regulations and policies will be strictly adhered to in serving everyone equally and fairly.



# About Us

## Our Vision

To offer opportunities to Fijians through scholarships and study loans to empower them through knowledge, skills and talent for a prosperous Fiji.

## Our Mission

Investing in tertiary education opportunities on equitable and equal basis to build Fiji's Human Capital.

## Our Values

### Respect Diversity

We recognize that the thoughts, feeling and backgrounds of others are as important as our own and believe in the transformative power of engaging many different perspectives.

### Transparency & Accountability

Fostering trust and open communication that generates ownership and clarity which strengthens relationship between the organization, staff and its customers.

### Empowerment

We believe in practicing positive reinforcement to instill greater trust in leadership allowing for creative expression in both staff and students.

### Fairness

We hold high standards of character and integrity as the foundations upon which the institution is built.

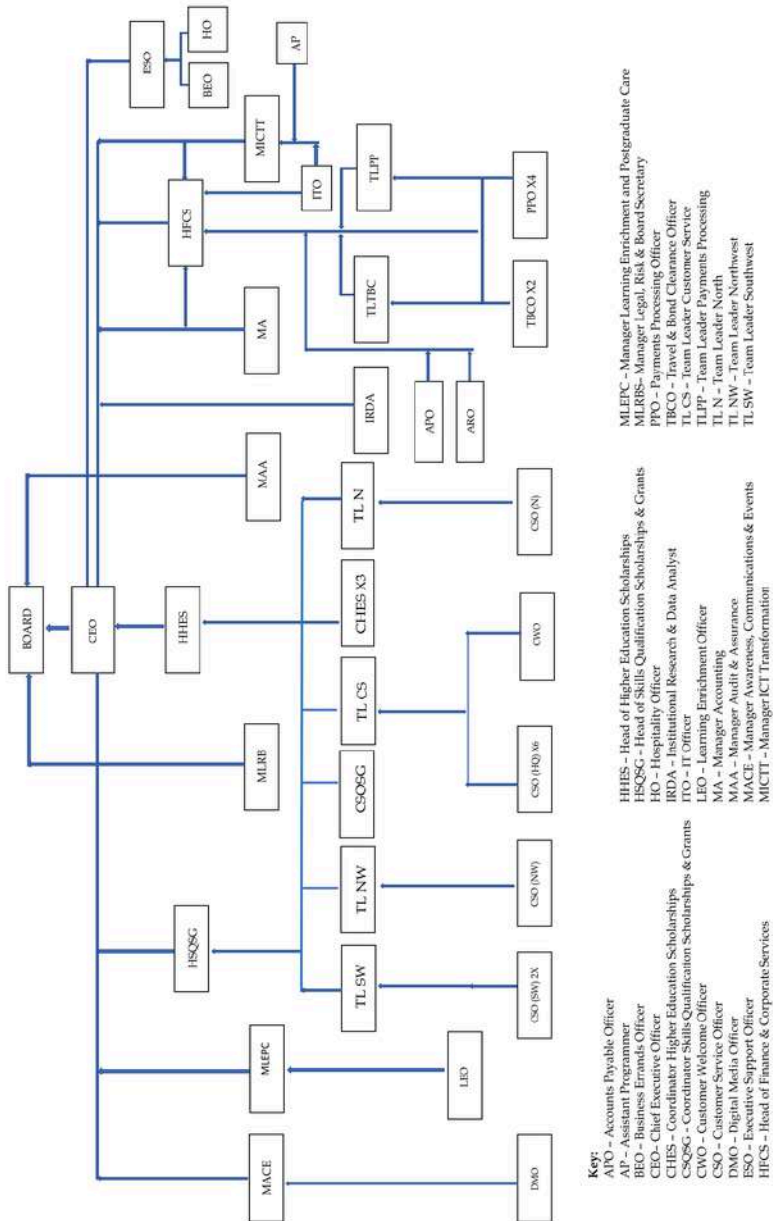
### Service Excellence

Create a culture of customer centricity going beyond expectations and delivery industry leading experience that develops trust and improves satisfaction.

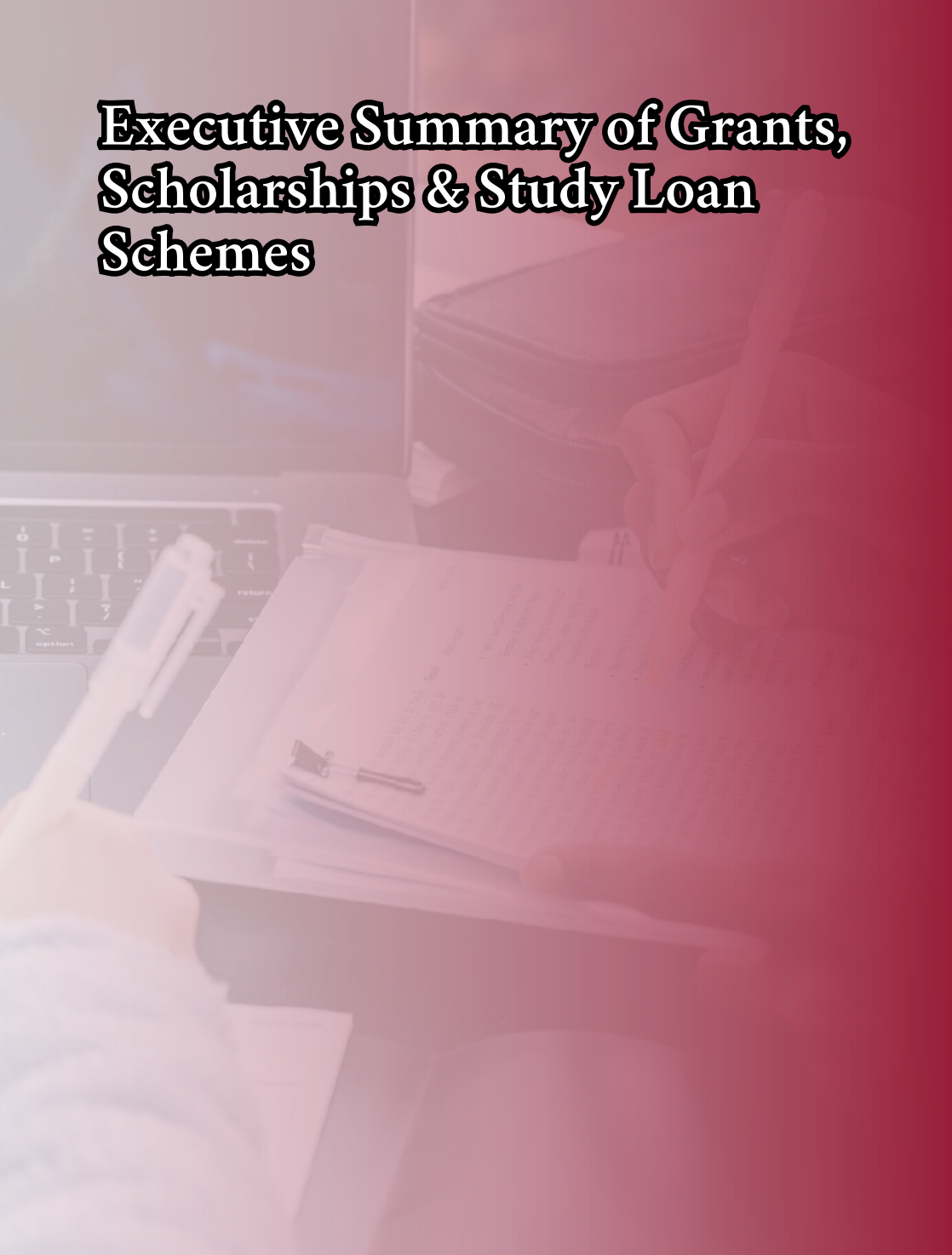
### Empathy

We strive to build a culture of empathy that enables us to collaborate better and work efficiently to deliver outstanding results.

# Organisational Structure



# **Executive Summary of Grants, Scholarships & Study Loan Schemes**



## Grants

Scheme	Description
<p style="text-align: center;"><b>Micro Qualification /Competency Based Training Scheme</b></p>	<p>This is for quick fix labour solution to mitigate increasing shortages in certain industry sectors through micro credentials for semi-skilling purpose for duration of 150-160 hours of competency-based training. A grant of \$500 per person per skill set in the following identified areas:</p> <p><b>Construction (500 Grants)</b> Skill Set: Basics of Tile Laying, Painting, Plumbing, Block Laying, Joinery and Cabinet Making.</p> <p><b>Tourism and Hospitality (1000 Grants)</b> Skill Set: Basics of House Keeping, Restaurant Service, Front Office Operations and Performing Arts.</p> <p><b>Automotive (200 Grants)</b> Skill Set: Basics of Panel Beating and Automotive Painting.</p> <p><b>White Goods Repair (400 Grants)</b> Skill Set: Basics of White Good Repair.</p> <p><b>Existing Small Business Owners (400 Grants)</b> Skill Set: Basics of Finance/Book Keeping and Marketing for existing SMEs.</p>

<p><b>Graduate Business Start Up Scheme</b></p>	<p>To assist TSLS sponsored graduates or final semester graduating student to undergo training and start a business. A grant of \$10,000 per student will be provided. This scheme will be managed by Fiji Commerce and Employers Federation.</p>
<p><b>Apprenticeship Scheme</b></p>	<p>To top-up \$2.00 an hour to the apprentice wage rate.</p>



## Scholarships

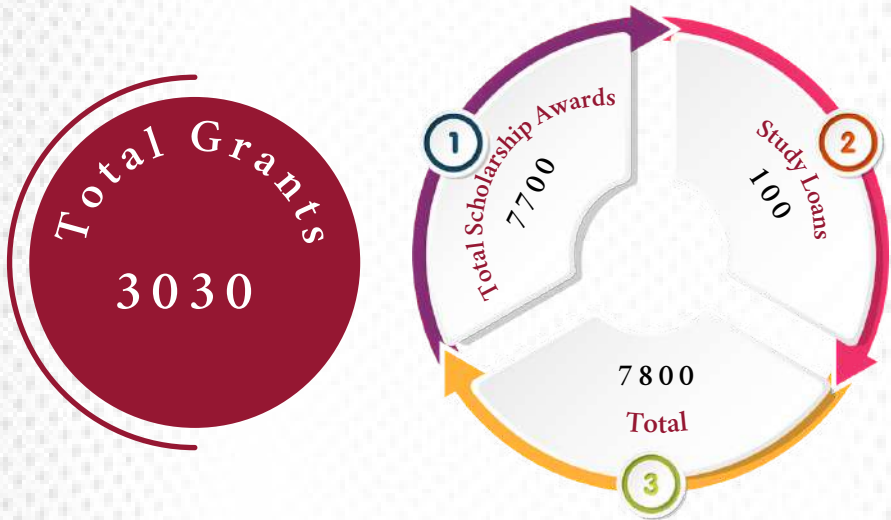
Scheme	Description
Masters & PhD by Research Scheme	This is an existing scheme for eligible local and New Zealand universities in national priority research areas.
Cost Sharing Overseas PhD Scholarships Scheme	This is a newly established scheme to partially support the students with airfares, stipend and associated cost except the Tuition Fee which shall be borne by agreed Australian universities.
Merit Based Undergraduate Overseas Scheme	This is an existing scheme available for programmes under the national priority areas which are not offered locally.
Merit Based Postgraduate Diploma/ Specialisation In-Service Overseas Scheme	This is a newly established scheme to support Post Graduate Diploma Programmes for specialisations under the national priority areas which are not offered locally.
Merit Based Higher Education – Level 7 Local Scheme	This is an existing scheme available for programmes under the national priority areas which are offered locally.
Merit Based Skills Qualification Scheme	This is an existing scheme available for programmes at Certificate III, Certificate IV, Diploma Level 5 & 6 under the national priority areas which are offered locally.



<b>Students with Special Needs Scheme</b>	This is an existing scheme available for students with disabilities.
<b>In-Service Scheme</b>	This is an existing scheme available for employees in Public Sector Organisations for programmes under the national priority areas which are offered locally.
<b>Higher Education (Level 7) with minimum Cut-Off Mark Scheme</b>	This is an existing scheme available for Level 7 programmes under the national priority areas which are offered locally.
<b>Skills Qualification Based on Offer Letter Scheme</b>	This is an existing scheme available for programmes at Certificate III, Certificate IV, Diploma Level 5 & 6 under the national priority areas which are offered locally.
<b>Industry/Employer Based Skills Qualification Scheme</b>	This is a newly established scheme available for programmes at Certificate III, Certificate IV, Diploma Level 5 & 6 under the national priority areas which are offered locally by an approved Industry/Employer provider.
<b>Hardship Assistance Scheme</b>	This is an existing scheme available for students who have privately attempted one (1) year of study on full academic load and have at least achieved 50% pass rate.

Study Loan	
Scheme	Description
In-Service Scheme	This is an existing scheme available for employees in Public and Private Sector Organisations for programmes under the national priority areas which are offered locally.

*Total Grants = 3030*  
*Total Scholarship Awards + Study Loans = 7800*



# Schemes & Eligibility Criteria

2.1 Grants

2.2 Scholarships

2.3 Study Loan

## **2.1 Grants**

- **Micro Qualification/ Competency Based Training Scheme (2500 Grants)**
- **Graduate Business Start Up Scheme (30 Grants)**
- **Apprenticeship (500 Grants)**

### **2.1.1. Micro Qualification/ Competency Based Training Scheme (2500 Grants).**

#### **Eligibility Criteria**

An applicant must:

1. be a Fiji citizen.
2. be ordinarily resident in Fiji for at least three (3) years before the award commencement date unless determined by the Service or delegated authority on case-by-case basis.
3. must obtain an offer letter from a training provider or industry-based organisation with training facilities for the eligible grant skills set.
4. be at least 17 years at the time of application.
5. not be in any form of employment during the period of sponsorship.
6. be an active entrepreneur for SME for Existing Small Entrepreneurs skill set.
7. not be an existing TSLS sponsored/funded student or sponsored through any other agency.

### **2.1.2. Graduate Business Start Up Scheme (30 Grants).**

#### **Eligibility Criteria**

An applicant must:

1. be a Fiji citizen.
2. be ordinarily resident in Fiji for at least three (3) years before the award commencement date unless determined by the Service or delegated authority on case-by-case basis.
3. be a sponsored graduate or a final semester graduating student.
4. meet eligibility and selection criteria set by Fiji Commerce & Employers Federation.

### **2.1.3. Apprenticeship (500 Grants).**

#### **Eligibility Criteria**

An applicant must:

1. be a Fiji citizen.
2. be ordinarily resident in Fiji for at least three (3) years before the award commencement date unless determined by the Service or delegated authority on case-by-case basis.
3. secure an apprenticeship agreement with the employer and the provider.
4. be actively enrolled with an eligible higher education institution.
5. not be an existing TSLS sponsored/funded student or sponsored through any other agency.

## 2.2 Scholarships

- Scholarships for Masters & PhD by Research Scheme - 30 Awards (20 for Masters (15 Local and 5 in New Zealand) and 10 for PhD (7 Local and 3 in New Zealand))
- Cost Sharing Overseas PhD Scholarships Scheme (20 Awards)
- Scholarships for Merit Based Undergraduate Overseas Scheme (80 Awards)
- Scholarships for Merit Based Postgraduate Diploma/Specialisation In-Service Overseas Scheme (20 Awards)
- Scholarships for Merit Based Higher Education – Level 7 Local Scheme (700 Awards)
- Scholarships for Merit Based Skills Qualifications Scheme (200 Awards)
- Scholarships for Students with Special Needs Scheme (20 Awards)
- Scholarships for In-Service Scheme - 50 Awards Public Sector Organisation
- Scholarships for Higher Education (Level 7 - Degree) With Minimum Cut-Off Mark Scheme (2500 Awards)
- Scholarships for Skills Qualification based on Offer Letter Scheme (2780 Awards)
- Scholarships for Industry/Employer Based Skills Qualification (300 Awards)
- Scholarships for Hardship Assistance Scheme (1000 Awards)



## 2.2.1. Scholarships for Masters & PhD by Research Scheme - 30 Awards (20 for Masters (15 Local and 5 in New Zealand) and 10 for PhD (7 Local and 3 in New Zealand)).

### Eligibility Criteria

An applicant must:

1. be a Fiji citizen.
2. be ordinarily resident in Fiji for at least three (3) years before the award commencement date unless determined by the Service or delegated authority on case-by-case basis.
3. have the research proposal approved and obtain a candidature confirmation letter for full time mode.
4. not be on an existing bond service or be engaged in any form of employment.

### Scheme Priority Disciplines

1. Medical & Health Services.
2. Engineering Services.
3. Climate Change/Environmental Science.
4. Marine Science.
5. Forestry.
6. Public Policy and Analysis.
7. Economic Modelling and Policies.
8. Public Financing.
9. Information Technology Services.
10. Social Science.



### Scheme Eligible Higher Education Institutions

1. Auckland University of Technology.
2. Fiji National University.
3. Massey University.
4. The University of Auckland.
5. The University of the South Pacific.
6. University of Canterbury.
7. University of Fiji.
8. University of Waikato.
9. Victoria University of Wellington.



## 2.2.2. Cost Sharing Overseas PhD Scholarships Scheme (20 Awards)

### Eligibility Criteria

An applicant must:

1. be a Fiji citizen.
2. be ordinarily resident in Fiji for at least three (3) years before the award commencement date unless determined by the Service or delegated authority on case-by-case basis.
3. secure an offer letter or candidature based on eligible university's requirements for full time mode.
4. not be on an existing bond service or be engaged in any form of employment.

### Scheme Priority Disciplines

1. Medical & Health Services.
2. Engineering Services.
3. Change/Environmental Science.
4. Marine Science.
5. Forestry.
6. Public Policy and Analysis.
7. Economic Modelling and Policies.
8. Public Financing.
9. Inclusive Education.
10. Information Technology Services.
11. Social Science.

### Scheme Eligible Higher Education Institutions

1. Queensland University of Technology.
  2. University of Newcastle.
- (more to be added)



### 2.2.3. Scholarships for Merit Based Undergraduate Overseas Scheme (80 Awards).

#### Eligibility Criteria

An applicant must:

1. be a Fiji citizen.
2. be ordinarily resident in Fiji for at least three (3) years before the award commencement date unless determined by the Service or delegated authority on case-by-case basis.
3. be in Year 13 in 2024 or such equivalent studies as determined by TSLS at the time of application. An applicant who has completed Foundation Studies or repeats Year 13 is not eligible to apply for the Scheme.
4. score 340/400 and above in Year 13 examination and apply in a listed programme for Overseas Scholarship.
5. secure a place at an eligible institution by means of a final offer letter.

#### Scheme Priority Disciplines and Programmes

Disciplines	Programmes	No. of Awards
Engineering Services	Bachelor of Engineering: Energy Engineering, Hydrology Engineering, Manufacturing Engineering, Road Engineering, Structural Engineering, Building Service Engineering, Plant Engineering, Mining Engineering, Environmental Engineering.	10
Medical & Health Services	Bachelor's Degree in: Bio Medical Engineering, Speech Therapist, Clinical Psychology/Counselor, Sports Medicine, Sports Science.	10
Agriculture, Forestry & Fisheries	Bachelor's Degree in: Veterinary Sciences, Aquaculture, Fish Technology, Plant Pathologist, Biosecurity, Seafood Science and Technology, Virologist-Livestock, Microbiologist, Agricultural Irrigation.	10
Information Technology Services	Bachelor's degree in: Data Science, Software Development, Cyber Security, Geographical Information System, Business Analytics, Geological Information System.	20
Science and Innovation	Bachelor's Degree in: Meteorology.	10
Business and Commerce	Bachelor of Commerce in: Productivity Analyst, Actuarial Finance/Science, Public Policy Specialist.	10
Special Areas	Forensic Science, Quantity Surveying, Architectural Design, Special Child Studies.	10

## Scheme Eligible Higher Education Institutions

1. Auckland University of Technology.
2. Massey University.
3. Monash University.
4. Queensland University of Technology.
5. Swinburne University of Technology.
6. The University of Auckland.
7. University of Canberra.
8. University of Canterbury.
9. University of Newcastle.
10. University of New South Wales.
11. University of Sydney.
12. University of Waikato.
13. Victoria University of Wellington.
14. Western Sydney University.



## 2.2.4. Scholarships for Merit Based Postgraduate Diploma / Specialisation In-Service Overseas Scheme (20 Awards)

### Eligibility Criteria

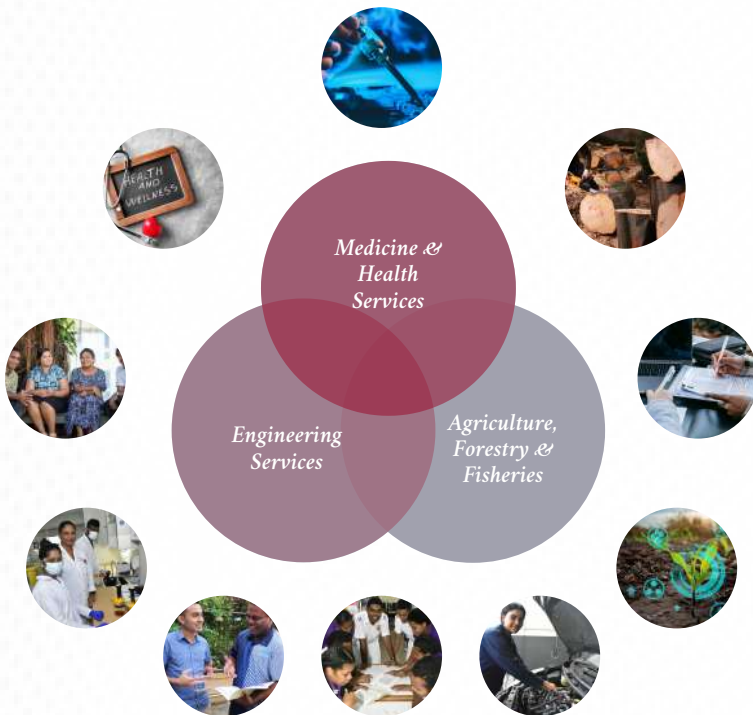
An applicant must:

1. be a Fiji citizen.
2. be ordinarily resident in Fiji for at least three (3) years before the award commencement date unless determined by the Service or delegated authority on case-by-case basis.
3. be employed in a Public or Private Sector organisation.
4. be nominated by the respective Permanent Secretary or Head of the organisation for sponsorship.
5. secure a place at an eligible institution by means of a final offer letter.
6. not be an existing TSLs sponsored/funded student or sponsored through any other agency.
7. not be on an existing bond service except for medical doctors who may be eligible after 5 years of service.

Scheme Priority Disciplines and Programmes	
Disciplines	Post Graduate Diploma Programmes
Medicine & Health Services	<ul style="list-style-type: none"> <li>• Radiology</li> <li>• Critical Care/Acute Care in Nursing</li> <li>• Rehabilitation Medicine</li> <li>• Cardiologist</li> </ul>
Engineering Services	<ul style="list-style-type: none"> <li>• Structural Engineering</li> <li>• Road Pavement and Highway</li> <li>• Hydrology</li> <li>• Geotechnical Engineering</li> <li>• Water and Sewerage</li> </ul>
Agriculture, Forestry & Fisheries	<ul style="list-style-type: none"> <li>• Veterinary Science</li> </ul>

## Scheme Eligible Higher Education Institutions

1. Auckland University of Technology.
2. Massey University.
3. Monash University.
4. Queensland University of Technology.
5. Swinburne University of Technology.
6. The University of Auckland.
7. University of Canberra.
8. University of Canterbury.
9. University of Newcastle.
10. University of New South Wales.
11. University of Sydney.
12. University of Waikato.
13. Victoria University of Wellington.
14. Western Sydney University.





## 2.2.5. Scholarships for Merit Based Higher Education – Level 7 Local Scheme (700 Awards)

### Eligibility Criteria

An applicant must:

1. be a Fiji citizen.
2. be ordinarily resident in Fiji for at least three (3) years before the award commencement date unless determined by the Service or delegated authority on case-by-case basis.
3. be in Year 13 in 2024 or such equivalent studies as determined by TSLS at the time of application.
4. an applicant who has completed Foundation Studies is not eligible to apply for the Scheme.
5. an applicant who has repeated Year 13 in 2024 or prior is not eligible to apply for the Scheme except for MBBS. An applicant who has repeated Year 13 in 2024 or prior and applies for MBBS, must have scored 250 plus in the first attempt in Year 13, and 365 plus in the subsequent attempt.
6. secure a place at an eligible institution by means of a final offer letter.

### Scheme Priority Disciplines and Programmes

Engineering Services			
Programmes	No. of Awards	Qualifying Cut-Off Mark for Non-Rural and Maritime Students	Qualifying Cut-Off Mark for Rural and Maritime Students
Bachelor's Degree in: Civil Engineering, Electrical/Electronic Engineering, Mechanical Engineering.	30	Aggregate Score of 330/400 in Year 13 with a pass in English, Mathematics, Physics and one more subject meeting the TEI's requirements.	Aggregate Score of 320/400 in Year 13 with a pass in English, Mathematics, Physics and one more subject meeting the TEI's requirements.
Medical & Health Services			
Programmes	No. of Awards	Qualifying Cut-Off Mark for Non-Rural and Maritime Students	Qualifying Cut-Off Mark for Rural and Maritime Students
Bachelor's Degree in: Dietetics & Nutrition, Nursing, Public Health, Medical Lab Sciences, Physiotherapy, Pharmacy, Medical Imaging Science, MBBS and BDS.	155 (of which 60 is MBBS, 5 BDS and 50 Nursing)	Aggregate score of 330/400 in Year 13 with a pass in English and the area specialization subjects.  For MBBS Cut-Off will be 350 in Year 13 (First Attempt) Repeaters- Cut-Off will be 365.  For Nursing Cut-Off will be 310 in Year 13.	Aggregate score of 320/400 in Year 13 with a pass in English and the area specialization subjects.  For MBBS Cut-Off will be 340 in Year 13 (First Attempt) Repeaters- Cut-Off will be 365.  For Nursing Cut-Off will be 300 in Year 13.

## Scheme Priority Disciplines and Programmes

Agriculture, Forestry & Fisheries			
Programmes	No. of Awards	Qualifying Cut-Off Mark for Non-Rural and Maritime Students	Qualifying Cut-Off Mark for Rural and Maritime Students
Bachelor's Degree in: Agriculture, Agricultural Engineering, Agribusiness, Forestry, Fisheries, Agriculture Economics, Animal Science	30	Aggregate Score of 310/400 in Year 13 with a pass in English and Agriculture.	Aggregate Score of 300/400 in Year 13 with a pass in English and Agriculture.
Arts			
Programmes	No. of Awards	Qualifying Cut-Off Mark for Non-Rural and Maritime Students	Qualifying Cut-Off Mark for Rural and Maritime Students
Bachelor's Degree in: Journalism, Media and Communication, Sports Education and Exercise Science	20	Aggregate Score of 310/400 in Year 13 with a pass in English.	Aggregate Score of 300/400 in Year 13 with a pass in English.
Information Technology Services			
Programmes	No. of Awards	Qualifying Cut-Off Mark for Non-Rural and Maritime Students	Qualifying Cut-Off Mark for Rural and Maritime Students
Bachelor's degree in: Telecommunications Networking, Networks and Security, Software Development, Programming, Information System, Computing Science, Information Technology	130	Aggregate Score of 320/400 in Year 13 with a pass in English and Mathematics.	Aggregate Score of 310/400 in Year 13 with a pass in English and Mathematics.

## Scheme Priority Disciplines and Programmes

Social Work			
Programmes	No. of Awards	Qualifying Cut-Off Mark for Non-Rural and Maritime Students	Qualifying Cut-Off Mark for Rural and Maritime Students
Bachelor's Degree in: Social Work, Social Policy and Policy Administration and Psychology.	20	Aggregate score of 310/400 in Year 13 with a pass in English.	Aggregate score of 300/400 in Year 13 with a pass in English.
Science and Innovation			
Programmes	No. of Awards	Qualifying Cut-Off Mark for Non-Rural and Maritime Students	Qualifying Cut-Off Mark for Rural and Maritime Students
Bachelor's Degree in: Environmental Science, Environmental Management, Marine Management	40	Aggregate Score of 310/400 in Year 13 with a pass in English.	Aggregate Score of 300/400 in Year 13 with a pass in English.
Land/Town Planning			
Programmes	No. of Awards	Qualifying Cut-Off Mark for Non-Rural and Maritime Students	Qualifying Cut-Off Mark for Rural and Maritime Students
Bachelor's Degree in: Land Surveying, Urban and Regional Planning, Real Estate and Property Management, Geo-Spatial Engineering, GIS/Land Acquisition and Real Estate and Property Valuation	40	Aggregate Score of 310/400 in Year 13 with a pass in English.	Aggregate Score of 300/400 in Year 13 with a pass in English.

## Scheme Priority Disciplines and Programmes

Business and Commerce			
Programmes	No. of Awards	Qualifying Cut-Off Mark for Non-Rural and Maritime Students	Qualifying Cut-Off Mark for Rural and Maritime Students
Bachelor's Degree in: Accounting, Economics, Finance, Official Statistics, Information Systems, Professional Accounting, HRM and Industrial Relations, Public Administration and Management	110	Aggregate score of 340/400 in Year 13 with a pass in English and Mathematics for Accounting, Economics, Finance and Official Statistics.	Aggregate score of 330/400 in Year 13 with a pass in English and Mathematics for Accounting, Economics, Finance and Official Statistics.
Education			
Programmes	No. of Awards	Qualifying Cut-Off Mark for Non-Rural and Maritime Students	Qualifying Cut-Off Mark for Rural and Maritime Students
Bachelor of Education Secondary (Pre-Service)  1. Mathematics, Physics and Computer Science (35) 2. Industrial Arts (20) 3. Bachelor of Education Primary (60) 4. Bachelor of Education ECE (10)	125	Aggregate score of 310/400 In Year 13 with a pass in English and the subject area specialization.	Aggregate score of 300/400 In Year 13 with a pass in English and the subject area specialization.

*Note: For teacher training scholarships may require interviews before offers.*

## Scheme Eligible Tertiary Education Institutions

1. Fiji National University.
2. Fulton Adventist University College.
3. Sangam Institute of Technology.
4. The University of the South Pacific.
5. University of Fiji.



## 2.2.6. Scholarships for Merit Based Skills Qualifications Scheme (200 Awards).

### Eligibility Criteria

An applicant must:

1. be a Fiji citizen.
2. be ordinarily resident in Fiji for at least three (3) years before the award commencement date unless determined by the Service or delegated authority on case-by-case basis.
3. have completed and passed at least Year 13 Examination in 2024 with a minimum score of 250/400 or 240/400 if from rural and maritime school or equivalent as determined by TSLS. An applicant who has completed Foundation Studies is not eligible to apply for the scheme. An applicant who has repeated Year 13 in 2024 or prior is not eligible to apply for the scheme except for Pilot Training.
4. have completed and passed at least Year 12 Examination in 2024 with a minimum score of 270/400 or 260/400 if from rural and maritime school or equivalent as determined by TSLS. An applicant who has completed Preliminary Studies and repeats Year 12 is not eligible to apply for the Scheme.
5. for Commercial Pilot Training Programme have completed Year 13 Examination in 2024 with a minimum score of 310/400 (Year 13 first attempt) and have scored 70% and above in English, Pure Mathematics and Physics. An applicant who has repeated Year 13 in 2024 or prior and applies for Pilot Training, must have scored 250 plus in the first attempt in Year 13, and 335 plus in the subsequent attempt. A pass in Fiji Airways assessment is compulsory for Pilot Training scholarships despite meeting the Cut-Off marks.
6. secure a place at an eligible institution by means of a final offer letter.

### Scheme Priority Disciplines and Programmes

Discipline	Programmes	Award
Agriculture, Forestry & Fisheries	Agricultural Engineering, Horticulture, Agro Forestry, Animal Husbandry, Applied Fisheries, Aquaculture, Forestry, Wood Processing and Value Adding.	5
Hotel and Tourism	Baking & Patisserie, Cookery, Front Office Operations, Housekeeping & Accommodation Operations, Restaurant Services, Hospitality and Hotel Management, Culinary Art, Restaurant Operations, Tourism Studies, Food and Beverage, Kitchen Operations.	25
Business, Commerce & Retails Services	Customs and Contact Centre Operations.	5

## Scheme Priority Disciplines and Programmes

Discipline	Programmes	Award
Engineering Services	Fitting and Machining, Plant Maintenance Engineering, Fabrication and Welding, Aircraft Maintenance Engineering (Avionics), Aircraft Maintenance Engineering (Mechanical), Manufacturing Engineering, Civil Engineering, Renewable and Sustainable Engineering, Plant Engineering, Mechanical Engineering, Transport Technology and Management (Roads).	25
Automotive and Heavy Plants	Automotive Body Works, Automotive Engineering, Automotive Engineering (Automotive Electrical and Electronics), Automotive Engineering Heavy Commercial Vehicle, Automotive Engineering Heavy Mobile Plant, Automotive Engineering Light Motor Vehicle, Automotive Engineering Panel and Paint, Automotive Mechanic.	25
Medical & Health Para-Professionals	Enrolled Nursing, Biomedical Engineering, Ageing and Community Support Care, Dental Assisting, Clinical Laboratory Technology, Community Nutrition.	10
Construction	Carpentry, Joinery and Cabinet Making, Plumbing and Sheetmetal, Quantity Surveying, Architectural Drafting.	20
Electrical	Electrical Engineering, Electronics Engineering, Refrigeration and Airconditioning, Fitting & Machining, Electronics/ Instrumentation & Control, Outdoor Powered Equipment.	15
Fashion and Beauty Therapy	Hairdressing, Beauty Therapy, Fashion.	5
Mining	Geology, Mining and Quarrying.	5



## Scheme Priority Disciplines and Programmes

Discipline	Programmes	Award
Information Technology Services	Programming, Software Development, Website Designing, Graphic Design Electronics/Telecommunication & Networking.	5
Creative Arts and Talents	Film & Television Production, Graphic Arts, Music, Sports Science.	5
Land/Town Planning	Land Surveying.	10
Science and Innovation	Marine Engineering and Nautical Science.	10
Education	Early Childhood Education.	10
Pilot Training	Commercial Pilot Training.	20

*Note: For Commercial Pilot Training and Aircraft Engineering programmes the final selection will be done by Fiji Airways.*

## Scheme Eligible Tertiary Education Institutions

1. Advance Aviation Training (PTE) Limited.
2. Caregivers Training Institute Pte Limited.
3. Centre for Applied Technology Development.
4. Corpus Christi Teachers College.
5. Fiji National University.
6. Keshals Business Education Institute.
7. Montfort Boys Town.
8. Navuso Agricultural Technical Institute.
9. Pacific Flying School.
10. Pacific Polytechnic Limited
11. Pivot Point.
12. Service Pro.
13. SPA Academy Fiji.
14. The University of the South Pacific.
15. Vishan Institute of Technology.

## 2.2.7. Scholarships for Students with Special Needs Scheme (20 Awards).

### Eligibility Criteria

An applicant must:

1. be a Fiji citizen.
2. be ordinarily resident in Fiji for at least three (3) years before the award commencement date unless determined by the Service or delegated authority on case-by-case basis.
3. be able to secure a final offer letter in an eligible funded programme, and demonstrated tertiary study ability and endorsed by National Council for Persons with Disabilities.
4. not be an existing TSLS sponsored/funded student or sponsored through any other agency.
5. not be on an existing bond service.

### Scheme Eligible Tertiary Education Institutions

1. Caregivers Training Institute Pte Limited.
2. Centre for Applied Technology Development.
3. Corpus Christi Teachers College.
4. Fiji National University.
5. Fulton Adventist University College.
6. Keshals Business Education Institute.
7. Montfort Boys Town.
8. Navuso Agricultural Technical Institute.
9. Pacific Polytechnic Limited.
10. Pivot Point.
11. Sangam Institute of Technology.
12. Service Pro.
13. SPA Academy Fiji.
14. The University of the South Pacific.
15. University of Fiji.
16. Vishan Institute of Technology.



## 2.2.8. Scholarships for In-Service Scheme - 50 Awards Public Sector Organisation

### Eligibility Criteria

An applicant must:

1. be a Fiji citizen.
2. be ordinarily resident in Fiji for at least three (3) years before the award commencement date unless determined by the Service or delegated authority on case-by-case basis.
3. be employed in a Public Sector organisation.
4. be nominated by the respective Permanent Secretary or Head of the organisation for sponsorship.
5. secure a place at an eligible institution by means of a final offer letter.
6. not be an existing TSLS sponsored/funded student or sponsored through any other agency.
7. not be on an existing bond service except for medical doctors who may be eligible after 5 years of service.
8. be paid Tuition only.

### Scheme Priority Disciplines and Programmes

Disciplines	Area of Study	Level of Study	Quota
Medicine & Health Services	Dermatology	Post-Graduate Diploma	2
	Anesthesia		5
	Epidemiology		2
	Midwifery		5
	Obstetrics and Gynecology		2
	Emergency Nursing		5
	Surgery		5
	Pathology		3
	Mental Health		2
	Eye Care		2

## Scheme Priority Disciplines and Programmes

Disciplines	Area of Study	Level of Study	Quota
Education	Special and Inclusive Education	Degree	5
	Early Childhood Education	Degree	5
	Counselling and Psychology	Diploma or Degree	3
Land/Town Planning	Urban and Regional Planning	Degree	2
Information Technology Services	Cyber Security	Post-Graduate Diploma	2
<b>Total</b>			<b>50</b>

## Scheme Eligible Tertiary Education Institutions

1. Fiji National University.
2. Fulton Adventist University College.
3. Sangam Institute of Technology.
4. The University of the South Pacific.
5. University of Fiji.



### 2.2.9. Scholarships for Higher Education (Level 7 - Degree) With Minimum Cut-Off Mark Scheme (2500 Awards).

#### Eligibility Criteria

An applicant must:

1. be a Fiji citizen.
2. be ordinarily resident in Fiji for at least three (3) years before the award commencement date unless determined by the Service or delegated authority on case-by-case basis.
3. have successfully completed Year 13 Examination in 2011 or Foundation Studies thereafter and scored a minimum mark as stated in the table below.
4. not be an existing TSLS sponsored/funded student or sponsored through any other agency.
5. not be on an existing bond service.
6. secure a place at an eligible institution by means of a final offer letter.
7. not have a combined parental income of more than \$150,000 or business net profit of more than \$20,000 unless allowed by means testing.



#### Scheme Priority Disciplines and Programmes

Engineering Services			
Programmes	No. of Awards	Qualifying Cut-Off Mark	
		Non-Rural and Maritime Students	Rural and Maritime Students
Level 7 Certificate, Level 7 Diploma and Level 7 Degree in Civil Engineering, Electrical/Electronic Engineering, Mechanical Engineering, Mechanical Engineering & Physics, Electrical/Electronic Engineering & Physics, Electrical/Electronic Engineering & Computer Science, Instrumentation & Control System, Electronic/Instrumentation & Control.	100	300 Marks or GPA of 3.38/4.5 or 3.75/5.0.	300 Marks or GPA of 3.38/4.5 or 3.75/5.0.

## Scheme Priority Disciplines and Programmes

Medical & Health Services			
Programmes	No. of Awards	Qualifying Cut-Off Mark	
		Non-Rural and Maritime Students	Rural and Maritime Students
Level 7 Certificate, Level 7 Diploma and Level 7 Degree in: Dietetics & Nutrition, Health Environment, Nursing, Health Promotion, Health Services Management, Medical Imaging Science, Medical Lab Sciences, Pharmacy, Public Health & Primary Health Care and Physiotherapy.	450 of which 330 is for Nursing	250 Marks or GPA of 2.81/4.5 or 3.13/5.0.	245 Marks or GPA of 2.76/4.5 or 3.06/5.0.

Agriculture, Forestry & Fisheries			
Programmes	No. of Awards	Qualifying Cut-Off Mark	
		Non-Rural and Maritime Students	Rural and Maritime Students
Level 7 Certificate, Level 7 Diploma and Level 7 Degree in Agriculture, Agricultural Engineering, Agribusiness, Veterinary Sciences, Forestry, Fisheries, Aquaculture, Fish Technology and Food Technology, Sustainable Fisheries, Animal Science, Animal Husbandry.	80	250 Marks or GPA of 2.81/4.5 or 3.13/5.0.	245 Marks or GPA of 2.76/4.5 or 3.06/5.0.

Information Technology Services			
Programmes	No. of Awards	Qualifying Cut-Off Mark	
		Non-Rural and Maritime Students	Rural and Maritime Students
Level 7 Certificate, Level 7 Diploma and Level 7 Degree in Telecommunications Networking, Cyber Security, Networks and Security, Software Development/Engineering, Programming, Library Sciences, Information System, Computing Science, Information Technology and Applied Computing, Computer Studies, Telecommunication & Networking.	200	250 Marks or GPA of 2.81/4.5 or 3.13/5.0.	245 Marks or GPA of 2.76/4.5 or 3.06/5.0.

## Scheme Priority Disciplines and Programmes

Social Work			
Programmes	No. of Awards	Qualifying Cut-Off Mark	
		Non-Rural and Maritime Students	Rural and Maritime Students
Level 7 Certificate, Level 7 Diploma and Level 7 Degree in Social Work, Social Policy and Policy Administration, Social & Community Work, Sociology, Applied Social Science, Psychology.	40	250 Marks or GPA of 2.81/4.5 or 3.13/5.0.	245 Marks or GPA of 2.76/4.5 or 3.06/5.0.

Science and Innovation			
Programmes	No. of Awards	Qualifying Cut-Off Mark	
		Non-Rural and Maritime Students	Rural and Maritime Students
Level 7 Certificate, Level 7 Diploma and Level 7 Degree in Environmental Science, Environmental Management, Climate Change, Marine Management, Ocean Resources Management, Ocean Resource Management & Policy, Marine Science, Mathematics, Physics, Chemistry, Biology, Food Technology.	130	250 Marks or GPA of 2.81/4.5 or 3.13/5.0.	245 Marks or GPA of 2.76/4.5 or 3.06/5.0.

Land/Town Planning			
Programmes	No. of Awards	Qualifying Cut-Off Mark	
		Non-Rural and Maritime Students	Rural and Maritime Students
Level 7 Certificate, Level 7 Diploma and Level 7 Degree in Land Surveying, Urban and Regional Planning, Real Estate and Property Management, Geo-Spatial Engineering, GIS/Land Acquisition, Real Estate and Property Valuation, Land Management, Land Management & Development.	100	250 Marks or GPA of 2.81/4.5 or 3.13/5.0.	245 Marks or GPA of 2.76/4.5 or 3.06/5.0.



## Scheme Priority Disciplines and Programmes

Business and Commerce			
Programmes	No. of Awards	Qualifying Cut-Off Mark	
		Non-Rural and Maritime Students	Rural and Maritime Students
Level 7 Certificate, Level 7 Diploma and Level 7 Degree in Accounting, Economics, Finance, Official Statistics, Project Planning & Management, Property Management and Valuation, Occupational Health and Safety, Information Systems, Professional Accounting, HRM and Industrial Relations, Public Administration and Management, Business Studies, Management, Marketing, Business Informatics, Agricultural Economics & Agribusiness, HRM & ER, International Business & Marketing, Banking and Library.	400	280 Marks or GPA of 3.15/4.5 or 3.50/5.0.	280 Marks or GPA of 3.15/4.5 or 3.50/5.0.
Education			
Programmes	No. of Awards	Qualifying Cut-Off Mark	
		Non-Rural and Maritime Students	Rural and Maritime Students
Level 7 Certificate, Level 7 in Diploma and Level 7 Degree in Counselling	10	250 Marks or GPA of 2.81/4.5 or 3.13/5.0.	245 Marks or GPA of 2.76/4.5 or 3.06/5.0.
Level 7 Certificate, Level 7 Diploma and Level 7 Degree in Special and Inclusive Education	5		
Level 7 Certificate, Level 7 Diploma and Level 7 Degree in Early Childhood Education	80		

## Scheme Priority Disciplines and Programmes

Education			
Programmes	No. of Awards	Qualifying Cut-Off Mark	
		Non-Rural and Maritime Students	Rural and Maritime Students
Level 7 Certificate, Level 7 Diploma and Level 7 Degree in Primary Education	300	250 Marks or GPA of 2.81/4.5 or 3.13/5.0.	245 Marks or GPA of 2.76/4.5 or 3.06/5.0.
Level 7 Certificate, Level 7 Diploma and Level 7 Degree in Secondary Education: Mathematics & Physics, Computer Science	100		
Level 7 Certificate, Level 7 Diploma and Level 7 Degree in Secondary Education: Industrial Arts	35		
Level 7 Certificate, Level 7 Diploma and Level 7 Degree in Secondary Education: Accounting, Economics, Computer Science and Technology	30		
Level 7 Certificate, Level 7 Diploma and Level 7 Degree in Secondary Education: History, Geography	30		
Level 7 Certificate, Level 7 Diploma and Level 7 Degree in Secondary Education: Biology, Chemistry, Home Economics, Food & Nutrition	40		
Level 7 Certificate, Level 7 Diploma and Level 7 Degree in Secondary Education: English Language & Literature, Hindi Language & Indian Culture, i-Taukei Studies, i-Taukei/Fijian Language, Literature & Language, Hindi Studies, English	50		
Level 7 Certificate, Level 7 Diploma and Level 7 Degree in Secondary Education: Physical Education & Music, Physical Education/Art & Craft	50		
Level 7 Certificate, Level 7 Diploma and Level 7 Degree in Secondary Education: Agriculture	20		

## Scheme Priority Disciplines and Programmes

Arts			
Programmes	No. of Awards	Qualifying Cut-Off Mark	
		Non-Rural and Maritime Students	Rural and Maritime Students
Level 7 Certificate, Level 7 Diploma and Level 7 Degree in: Language, Literature & Culture, Hindi Language & Indian Culture, i-Taukei Language, Hindi Language, Justice, Policing, Population Studies & Demography, Multilingual Studies, Media & Communication, Media Studies and Journalism, Police Management, Prosecution, History, Linguistic, Policing, Heritage and Arts, Politics, Geography, Non-Formal Education, Sports Education and Exercise Science	150	250 Marks or GPA of 2.81/4.5 or 3.13/5.0.	245 Marks or GPA of 2.76/4.5 or 3.06/5.0.
LLB including PDLP/GDLP	30		

Hotel and Tourism			
Programmes	No. of Awards	Qualifying Cut-Off Mark	
		Non-Rural and Maritime Students	Rural and Maritime Students
Level 7 Certificate, Level 7 Diploma and Level 7 Degree in: Tourism Studies, Hotel Management, Tourism & Hospitality, Tourism Hospitality Management, Tourism Management, Hospitality & Hotel Management	70	250 Marks or GPA of 2.81/4.5 or 3.13/5.0.	245 Marks or GPA of 2.76/4.5 or 3.06/5.0.

*Note: For teacher training scholarships may require interviews before offers.*

### Scheme Eligible Tertiary Education Institutions

1. Corpus Christi Teachers College
2. Fiji National University.
3. Fulton Adventist University College.
4. Sangam Institute of Technology.
5. The University of the South Pacific.
6. University of Fiji.



## 2.2.10. Scholarships for Skills Qualification based on Offer Letter Scheme (2780 Awards).

### Eligibility Criteria

An applicant must:

1. be a Fiji citizen.
2. be ordinarily resident in Fiji for at least three (3) years before the award commencement date unless determined by the Service or delegated authority on case-by-case basis.
3. secure a final offer letter from an eligible institution for either Certificate Level III, IV and Diploma level 5 & 6 programmes.
4. not be an existing TSLs sponsored/funded student or sponsored through any other agency.
5. not be on an existing bond service.
6. not have a combined parental income of more than \$150,000 or business net profit of more than \$20,000 unless allowed by means testing.

### Scheme Priority Disciplines and Programmes

Discipline	Programmes	Award
Agriculture, Forestry & Fisheries	Agricultural Engineering, Horticulture, Agro Forestry, Animal Husbandry, Applied Fisheries, Aquaculture, Forestry, Wood Processing and Value Adding.	160
Hotel and Tourism	Baking & Patisserie, Cookery, Front Office Operations, Housekeeping & Accommodation Operations, Restaurant Services, Hospitality and Hotel Management, Culinary Art, Restaurant Operations, Tourism Studies, Food and Beverage, Kitchen Operations.	350
Business, Commerce & Retails Services	Customs, Contact Centre Operations, Office Administration.	250

## Scheme Priority Disciplines and Programmes

Discipline	Programmes	Award
Engineering Services	Fitting and Machining, Plant Maintenance Engineering, Fabrication and Welding, Aircraft Maintenance Engineering (Avionics), Aircraft Maintenance Engineering (Mechanical), Manufacturing Engineering, Civil Engineering, Renewable and Sustainable Engineering, Plant Engineering, Mechanical Engineering, Transport Technology and Management (Roads).	230
Automotive and Heavy Plants	Automotive Body Works, Automotive Engineering, Automotive Engineering (Automotive Electrical and Electronics), Automotive Engineering Heavy Commercial Vehicle, Automotive Engineering Heavy Mobile Plant, Automotive Engineering Light Motor Vehicle, Automotive Engineering Panel and Paint, Automotive Mechanic.	400
Medical & Health Para-Professionals	Enrolled Nursing, Biomedical Engineering, Ageing and Community Support Care, Dental Assisting, Clinical Laboratory Technology, Community Nutrition.	80
Construction	Carpentry, Joinery and Cabinet Making, Plumbing and Sheetmetal, Quantity Surveying, Architectural Drafting.	450
Electrical	Electrical Engineering, Electronics Engineering, Refrigeration and Airconditioning, Fitting & Machining, Electronics/ Instrumentation & Control, Outdoor Powered Equipment.	240
Fashion and Beauty Therapy	Hairdressing, Beauty Therapy, Fashion.	50
Mining	Geology, Mining and Quarrying.	10

## Scheme Priority Disciplines and Programmes

Discipline	Programmes	Award
Information Technology Services	Programming, Software Development, Website Designing, Graphic Design, Electronics/Telecommunication & Networking.	300
Creative Arts and Talents	Film & Television Production, Graphic Arts, Music, Sports Science.	20
Land/Town Planning	Land Surveying.	50
Science and Innovation	Marine Engineering and Nautical Science.	40
Education	Early Childhood Education.	150

*Note: For Aircraft Engineering programmes the final selection will be done by Fiji Airways.*

## Scheme Eligible Tertiary Education Institutions

1. Caregivers Training Institute Pte Limited.
2. Centre for Applied Technology Development.
3. Corpus Christi Teachers College.
4. Fiji National University.
5. Keshals Business Education Institute.
6. Montfort Boys Town.
7. Navuso Agricultural Technical Institute.
8. Pacific Polytechnic Limited.
9. Pivot Point.
10. Service Pro.
11. SPA Academy Fiji.
12. The University of the South Pacific.
13. Vishan Institute of Technology.



## 2.2.11. Scholarships for Industry/Employer Based Skills Qualification (300 Awards)

### Eligibility Criteria

An applicant must:

1. be a Fiji citizen.
2. be ordinarily resident in Fiji for at least three (3) years before the award commencement date unless determined by the Service or delegated authority on case-by-case basis.
3. secure a final offer letter from an eligible industry/employer-based training provider for either Certificate Level III, IV and Diploma level 5 & 6 programmes.
4. not be an existing TSLs sponsored/funded student or sponsored through any other agency.
5. not be on an existing bond service.
6. not have a combined parental income of more than \$150,000 or business net profit of more than \$20,000 unless allowed by means testing.

### Scheme Priority Disciplines and Programmes

Discipline	Programmes	Award
Hotel and Tourism	Baking & Patisserie, Cookery, Front Office Operations, Housekeeping & Accommodation Operations, Restaurant Services, Hospitality and Hotel Management, Culinary Art, Restaurant Operations, Tourism Studies, Food and Beverage, Kitchen Operations.	45
Engineering Services	Fitting and Machining, Plant Maintenance Engineering, Fabrication and Welding, Aircraft Maintenance Engineering (Avionics), Aircraft Maintenance Engineering (Mechanical), Manufacturing Engineering, Civil Engineering, Renewable and Sustainable Engineering, Plant Engineering, Mechanical Engineering, Transport Technology and Management (Roads).	45



## Scheme Priority Disciplines and Programmes

Discipline	Programmes	Award
Automotive and Heavy Plants	Automotive Body Works, Automotive Engineering, Automotive Engineering (Automotive Electrical and Electronics), Automotive Engineering Heavy Commercial Vehicle, Automotive Engineering Heavy Mobile Plant, Automotive Engineering Light Motor Vehicle, Automotive Engineering Panel and Paint, Automotive Mechanic.	45
Construction	Carpentry, Joinery and Cabinet Making, Plumbing and Sheetmetal, Quantity Surveying, Architectural Drafting.	45
Electrical	Electrical Engineering, Electronics Engineering, Refrigeration and Airconditioning, Fitting & Machining, Electronics/ Instrumentation & Control, Outdoor Powered Equipment.	35
Mining	Geology, Mining and Quarrying.	10
Information Technology Services	Programming, Software Development, Website Designing, Graphic Design, Electronics/Telecommunication & Networking.	35
Public Sector	Public Administration, Public Policy, Project Management and Ethics.	40

### Scheme Eligible Training Providers

1. The eligible training providers to be confirmed.

## 2.2.12. Scholarships for Hardship Assistance Scheme (1000 Awards)

### Eligibility Criteria

An applicant must:

1. be a Fiji citizen.
2. be ordinarily resident in Fiji for at least three (3) years before the award commencement date unless determined by the Service or delegated authority on case-by-case basis.
3. have attempted year one (1) studies privately and have at least attained 50% pass rate.
4. be enrolled for a Diploma Level 5 or Higher Education Level 7 programmes at an eligible institution.
5. submit programme audit which confirms that you have attempted year one (1) studies as per full academic load requirement.
6. be enrolled as a full-time student on full academic load and not be engaged in any form of employment.
7. not be an existing TSLS sponsored/funded student or sponsored through any other agency.
8. not be on an existing bond service.
9. not have a combined parental income of more than \$150,000 or business net profit of more than \$20,000 unless allowed by means testing.

### Scheme Eligible Tertiary Education Institutions

1. Corpus Christi Teachers College.
2. Fiji National University.
3. Fulton Adventist University College.
4. Pivot Point.
5. Sangam Institute of Technology.
6. The University of the South Pacific.
7. University of Fiji.



## 2.3 Study Loan

- Tuition Only Study Loan for In-Service Scheme (100 Study Loans)

### 2.3.1. Tuition Only Study Loan for In-Service Scheme (100 Study Loans).

#### Eligibility Criteria

An applicant must:

1. be a Fiji citizen.
2. be ordinarily resident in Fiji for at least three (3) years before the award commencement date unless determined by the Service or delegated authority on case-by-case basis.
3. be in employment/evidence of self-employment in business at the time of application and remain in employment during the course of studies unless on leave with or without pay.
4. be seeking to attain a first higher education academic qualification or upgrade an existing qualification (same area) only if the earlier qualification was not funded by TSLS up to first Bachelor's Degree.
5. not be on an existing bond service.
6. provide a support letter from the employer on the need for employment demand for the intended qualification.
7. secure a place at an eligible institution by means of a final offer letter.
8. be paid tuition only.

Discipline	Quota
Engineering Services	10
Medicine & Health Services	10
Agriculture, Forestry & Fisheries	5
Information Technology	5
Social Works	5
Science and Innovation	10

Discipline	Quota
Land/Town Planning	5
Business and Commerce	20
Education	20
Arts	5
Hotel and Tourism	5
<b>Total</b>	<b>100</b>

#### Scheme Eligible Tertiary Education Institutions

1. Corpus Christi Teachers College.
2. Fiji National University.
3. Fulton Adventist University College.
4. Sangam Institute of Technology.
5. The University of the South Pacific.
6. University of Fiji.



# Know How To Apply

- TSLs Online Application Requirements
- Information on TSLs Online Registration & Application For Scholarships
- Account Creation Flowchart
- Online Application Processing Flowchart
- Student Notice

# TSLs Online Application Requirements



## Step 1: Registration

1. Visit [www.tsls.com.fj](http://www.tsls.com.fj) and click on the “Apply Online” button.
2. Click on the “Register” button to create your TSLs Apply Account using a valid email address (Gmail, Yahoo or Hotmail).
3. Applicants must use their own email address for the purpose of the application.
4. Once successfully registered, log in to your email to verify and activate your My TSLs Apply Account.

## Step 2: Application

1. Login to commence with your application.
2. Select My Account to update your personal details.
3. View Programs to select your eligible scheme and click Apply.
4. Update and complete task with required documents. Upon completion of each task, you must click “Mark as Complete” to move to the next task.
5. Accept Declaration to “Submit” your application successfully.
6. You can edit any task prior to application submission.

## Step 3: Application Processing Status

1. Log in and Click on “My Application” for the status and progress of your application.
2. Once the application is successfully submitted, the application status will change to “Processing”.
3. All applications must be successfully submitted before the application closing date.
4. Late and incomplete applications will not be considered for assessment.

---

Scan and get all the required documents ready before starting the process of applying online in the pdf, png, or jpg format. File size should not exceed 5MB.

For any issues with the online application, applicants can email on [it@tsls.com.fj](mailto:it@tsls.com.fj). Applicants can also use our live chat facility from 8.00am to 4.30pm Mondays to Thursdays and from 8.00am to 4.00pm on Fridays or email us on [mytsls@tsls.com.fj](mailto:mytsls@tsls.com.fj).

Visit our website [www.tsls.com.fj](http://www.tsls.com.fj) for specific information on the eligibility criteria and the quota balances for various schemes.

Provision of False Information is a serious offence under the False Information Act 2016.

# Information on TSLS Online Registration & Application For Scholarships

## Registration & Application

01

Applicants are to ensure that they have an active email address (*this should be under the students name*). The email address will be used for Registration & activate registrations.

Select your programmes wisely and make a firm decision

02

## Programme Selection

## Confirmed Offer Letters

03

Applicants are required to load the final Year 12 & Year 13 results or recognised equivalence upon receipt and the confirmed offer letters (*not provisional*), from the preferred Tertiary Education providers. Do not upload Year 12 & Year 13 annual results

Once the final marks and confirmed offer letters are uploaded and the application is submitted, the application will move to the processing stage for assessment against the relevant eligibility criteria and the student will be notified accordingly on the email registered on the system

04

## Application Processing

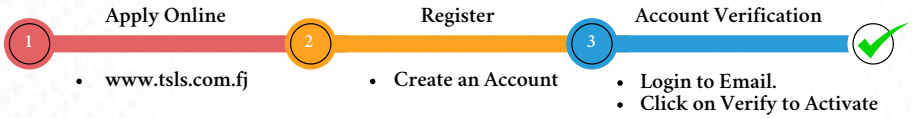


Scan to View the TSLS Online Application Step by Step Guide

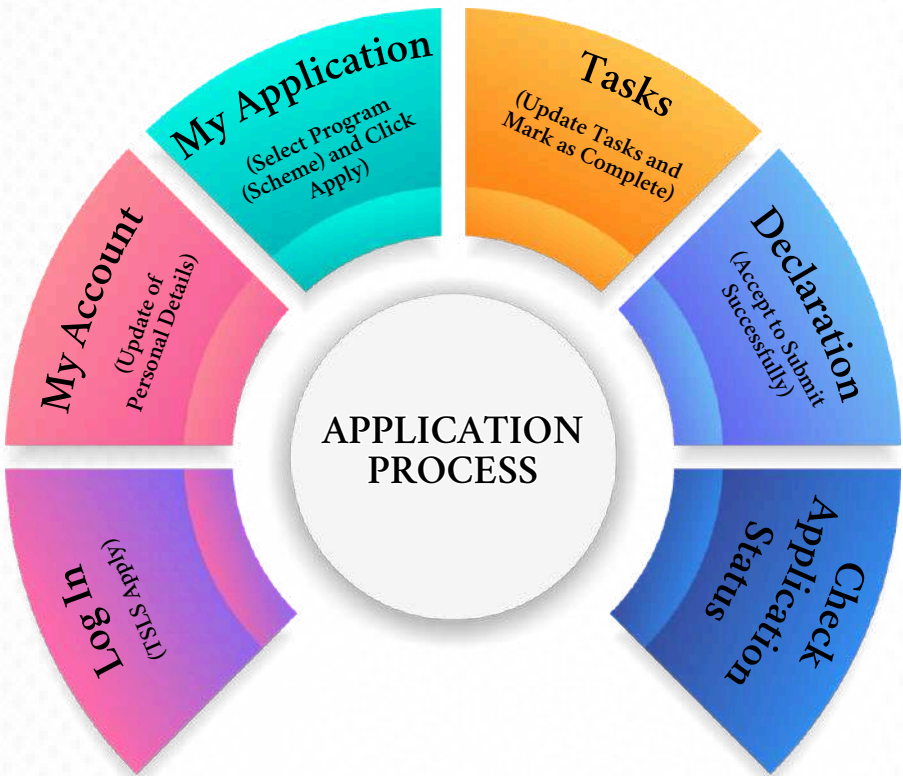




## Account Creation Flowchart



## Online Application Processing Flowchart



## Student Notice

- Once you receive scholarship offer letter and acceptance agreement from TSLS, you must wisely make a decision before accepting.
- If you wish to change your programme after scholarship offer is issued then you must select, reject or request for alternative choice and submit for reprocessing.
- Once the offer is accepted and confirmed, you undertake to accept programme. Any programme change beyond scholarship confirmation will result in delays to new offer or not approved.
- Applicants are reminded that receiving an offer letter from preferred Tertiary Education Provider does not guarantee automatic scholarship as applicants need to apply under the eligible scholarship scheme for sponsorship with TSLS.
- TSLS Sponsored students may work on part-time basis for maximum of 20 hours per week.
- *\*Students must seek approval from TSLS*

# Allowance Process and TSLS Account Statement Request

- Allowance Processing Flowchart
- Allowance Notice
- Online Account Statement Request
- Guide to Statement Request

## Allowance Processing Flowchart



### ALLOWANCE NOTICE

All allowance payments are through Bank, M-Paisa or My-Cash based on students' choice.

- The students staying in hostel can pay the hostel fees directly to the University.
- The students traveling by bus can use the cash to top-up their bus fare cards as and when required.

## Online Account Statement Request

The Tertiary Scholarships and Loans Service introduced the Online Statement Request Form replacing the manual application form which students were required to fill and email to TSLs. The new online application form is portal based and students are required to fill in their details online and submit. This allows request being submitted directly to the processing officer. The statement request is in 3 different categories of:

1. Temporary Travel Release
2. Bond Clearance
3. Clearance for Permanent or Long-Term Migration

The portal allows request to be processed within 5 working days and Statement Letters emailed directly to students email without them visiting TSLs office.

## Guide to Statement Request

1. Visit our Website [www.tsls.com.fj](http://www.tsls.com.fj)
2. Click on “Quick Links”
3. Click “Statements”, select the relevant “category” and fill the required details
4. Click “Submit”

A screenshot of the 'Submit a Statement Request' form. The form title is 'Submit a Statement Request' and the subtitle is 'Temporary Travel Release / Bond Clearance / Clearance for Permanent Migration (Overseas) / Clearance for Long-Term Travel'. The form is titled 'Statement Request Form' and contains the following fields: 'Please tick on the form below (managed by system from TSLs)', 'Select Request Category', 'Request Type', 'Select Type', 'First Name', 'Last Name', 'Surname', 'Other Names', 'Other Names', 'Email', 'Web Address', 'Institution/Company/Address', 'Email', 'File Card Identification Number', 'IN', 'Student ID Number', 'Student ID Number', 'Date of Birth', 'Web Address', 'Institution/Company/Address', 'Institution/Company/Address', 'Additional Messages', and a 'Submit' button at the bottom.

### Things to know when applying for TSLs statement

Note for students on the difference of the following:

- **Temporary Travel Release** - if travelling for duration of 3 months or less.
- **Bond Clearance** - if student has served the required bond and requires full clearance.
- **Clearance for Permanent or Long-Term Migration** - if students are yet to serve the required bond and intends to permanently migrate or travel on student visa or work permit.

# **Student Learning Enrichment and Work Skills**

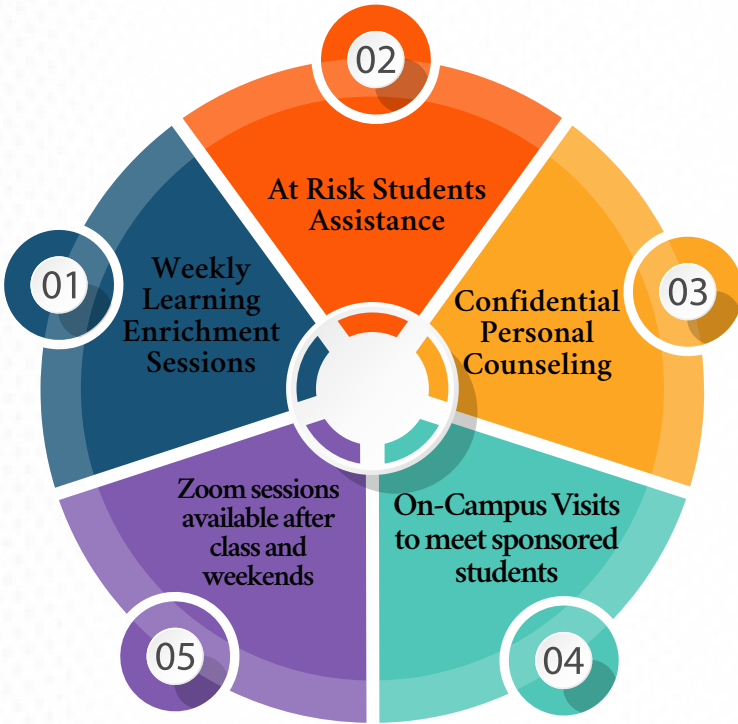
- TSLS Learning Enrichment Services
- Post-Graduation Care
- Employer Connect Portal (ECP)

## Student Learning Enrichment Services

TSLS provides Learning Enrichment services to its sponsored students to assist them through their learning journey. These sessions are conducted weekly, and details are made available on the TSLS Social media platforms.

These sessions provide the much-needed scaffolding support to students and some examples of topics covered are Time Management, Preparing for Exams, Assignment Planning and Submissions amongst others.

The following are some of the services provided by TSLS Learning Enrichment.



**Industry Mentoring** is also available where TSLS organizes Industry mentoring sessions in field areas such as Education, Engineering, Accounting amongst others. This is a platform that allows students to hear from the industry experts on requirements of the industry post-graduation.

If you or anyone you know is a TSLS sponsored student and is struggling, please contact the TSLS Learning support team today!

## Post-Graduation Care



TSLs provides post-graduation care sessions to TSLs sponsored students who have graduated. These sessions are targeted at preparing new graduates with the right skills to search for job opportunities.

The Post-Graduation care team provides the following (but not limited to) in order to assist our graduates:

1. Care sessions on the basics of job hunting (writing Resumes, Cover Letter, Interview Etiquette).
2. Link graduates with potential employers
3. Industry engagements



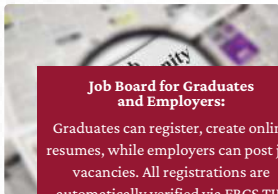


## Employer Connect Portal (ECP)

The Employer Connect Portal was launched in December 2023 and is a comprehensive job board that connects graduates to potential employers. The portal works by allowing companies to post their job vacancies and graduates to sign up and apply with their Resumes and Cover letters.

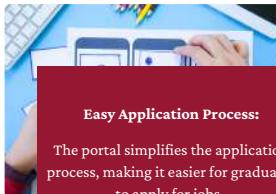
It is a comprehensive job board that is user friendly and allows smart job matching to suit the skill set requirements and preferences of both the Employer and the graduate respectively.

### ECP Key Features



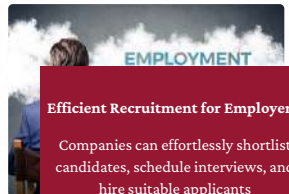
#### Job Board for Graduates and Employers:

Graduates can register, create online resumes, while employers can post job vacancies. All registrations are automatically verified via FRCS TIN verification integration.



#### Easy Application Process:

The portal simplifies the application process, making it easier for graduates to apply for jobs.



#### Efficient Recruitment for Employers:

Companies can effortlessly shortlist candidates, schedule interviews, and hire suitable applicants



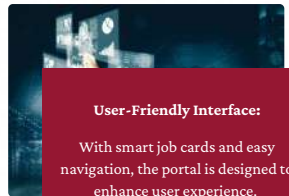
#### Smart Job Matching:

A sophisticated algorithm suggests the best job opportunities based on the applicant's skills, ensuring a good match between the job requirements and the applicant's capabilities.



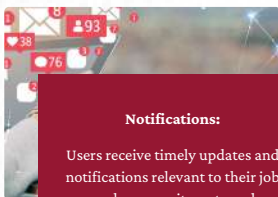
#### Insightful Reporting Modules:

The portal includes modules for analyzing the job market, skill demands, and scholarship trends, aiding in strategic decision-making.



#### User-Friendly Interface:

With smart job cards and easy navigation, the portal is designed to enhance user experience.



#### Notifications:

Users receive timely updates and notifications relevant to their job search or recruitment needs.



Scan the QR to  
Sign Up for  
ECP Now!

# Contact Us

1.Face to Face through our Offices located as follows:

- Level 1, Unit 36-37, Garden City Complex, Raiwai.
- 3rd Floor, Labasa Tikina House.
- Ground Floor, Rogorogovuda House, Lautoka.
- Airport Central Building, Ground Floor Unit 8, Namaka, Nadi.



2. Live chat facility from 8.00am to 4.30pm Mondays to Thursdays and from 8.00am to 4.00pm on Fridays via [www.tsls.com.fj](http://www.tsls.com.fj).

3.Email us on [mytsls@tsls.com.fj](mailto:mytsls@tsls.com.fj).

4.Call us on 8921240, 8921254, 8921265.

Follow TSLs Social Media pages for instant updates by scanning the below QR codes.

 FACEBOOK



 INSTAGRAM



 LINKEDIN



 TWITTER



 VIBER



 TIKTOK





Tertiary **Scholarships**  
& **Loans** Service

---

Empowering Fiji's Future



Tertiary **Scholarships**  
& **Loans** Service  
Empowering Fiji's Future



Service with Excellence  
2015 - 2025



Follow our website for  
more information