



**Tertiary Scholarships
& Loans Service**
Empowering Fiji's Future

2026 TSLS Scholarship Policies Handbook





Tertiary **Scholarships**
& **Loans** Service

Empowering Fiji's Future

Disclaimer

The content of the Handbook is current at the time of the publication and may be changed from time to time with amendments to Act and governing policies by the Service, line Minister and the Fiji Government.

The administration of the schemes is governed by TSLS Act and operational policies of the organisation.

TSLS reserves the right to add or delete national priority programmes and virement (with the approval from Minister for Finance) of the allocations.

Visit www.tsls.com.fj for most relevant information and the update.

Table of Content

Contents	Page
Message from the Hon. Deputy Prime Minister & Minister for Finance	5
Foreword by the Hon. Minister for Education	6
Message from the Chairperson and Executive Chair of TSLS	7
About Us	8
Executive Summary of Grants, Scholarships & Study Loan.....	9
TSLS Schemes & Eligibility Criteria.....	13
2.1 Grants	14
2.1.1 Micro Qualification/ Competency Based Training Scheme (3000 Grants)	14
2.1.2. Graduate Business Start Up Scheme (41 Grants)	14
2.1.3. Apprenticeship (100 Grants)	14
2.2 Scholarships	15
2.2.1 Scholarships for Masters & PhD by Research Scheme - 30 Awards (20 for Masters (15 Local and 5 in New Zealand) and 10 for PhD (7 Local and 3 in New Zealand))	15
2.2.2. Cost Sharing Overseas PhD Scholarships Scheme with Australian Universities (39 Awards).....	16
2.2.3. Scholarships for Postgraduate Diploma In-Service Overseas Scheme (20 Awards)	17
2.2.4. Scholarships for High Achievers Higher Education (Level 7) Overseas Scheme (80 Awards).....	18
2.2.5. Scholarships for High Achievers (Skills Qualification) Overseas Scheme (10 Awards).....	20
2.2.6. Scholarships for High Achievers Higher Education (Level 7) Local Scheme (700 Awards)	21
2.2.7. Scholarships for High Achievers (Skills Qualifications) Local Scheme (250 Awards).....	25
2.2.8. Scholarships for Students with Special Needs Higher Education (Level 7) Scheme (20 Awards) ..	28
2.2.9. Scholarships for Students with Special Needs (Skills Qualification) Scheme (20 Awards).....	29
2.2.10. Scholarships for In-Service Public Sector Scheme – (50 Awards).....	30
2.2.11. Scholarships for Higher Education (Level 7) With Minimum Cut Off Mark Scheme (3000 Awards).....	32
2.2.12. Scholarships for Equity Based Higher Education (Level 7) With Minimum Cut Off Mark Scheme (500 Awards).....	37
2.2.13. Scholarships for Skills Qualification based on Offer Letter Scheme (4500 Awards).....	41
2.2.14. Scholarships for Hardship Assistance Scheme (500 Awards).....	43
2.3 Study Loan	44
2.3.1. In-Service Study Loan Scheme (200 Study Loans).....	44
2.4 Scholarship Schemes Privileges	45
Know How To Apply	47
TSLS Online Application Requirements	48
Information on TSLS Online Registration & Application For Scholarships	49
Account Creation Flowchart	49
Online Application Processing Flowchart	49
Allowance Details.....	50
Changes to Allowance Rates.....	51
Equity Based Allowance.....	52
Travel & Bond Clearance.....	53
Purpose and Overview.....	54
User Guideline QR.....	54
Learning Enrichment Management System.....	55
Purpose and Overview.....	56
Industry Mentoring.....	56
Upgraded Alumni & Employer Connect.....	57
Purpose and Overview.....	58
Contact TSLS	59

Message from the Hon. Deputy Prime Minister & Minister for Finance, Strategic Planning, National Development and Statistics



Hon. Professor Biman Prasad

The Coalition Government is committed towards achieving sustainable development goal on quality education.

The targets on increasing access to tertiary education for youths including girls and people with disabilities are met by innovative scholarship and study grant policies.

We have forgiven over \$650 million in tertiary student loans benefitting more than 53,000 students and replaced the loan scheme with a full merit-based non discriminatory scholarship scheme that ensures no unnecessary burden on young tertiary graduates and their families, better quality graduates, high completion rates and clear alignment with the labor market needs.

The scholarships budget is aligned to the independent findings and recommendations of Review of Scholarship Priority Areas Report and Way Forward Human Capital Development Plan, Trend Analysis of historical investment data at TSLS and 2025-2029, Vision 2050 Fiji National Development Plan.

In 2025-2026 financial year, \$153 million is allocated to fund tertiary studies for 24,653 students, which includes 11,593 continuing students and 13,060 new students. This allocation is the highest ever for new intakes. The 2025-2026 allocation are in two categories of which include introduction of new schemes and adding value to existing schemes either through increased allocations or revising eligibility criteria. The scholarship policies are focused on replacing the loss of skills through migration and meet the demand driven skill sets required by our employers.

We need more people in the areas of Water and Sewerage, Manufacturing, Nautical Science, Hydrology and Aviation Management. To address the skills shortage in these areas, overseas scholarships has been expanded to TVET qualifications in Australia and New Zealand considering that these qualifications are not offered by Tertiary Education Providers in Fiji. In 2024-2025 budget we introduced Graduate Business Strat up Scheme as we want our graduates to also be job creators. This has been a huge success and funding allocation has been increased from 30 to 50 for 2025-2026 Financial Year.

In addition, Coalition Government has reviewed and increased the allowance for the students in the 2025-2026 national budget. This is to ensure that full cost for meals, accommodation, stationaries and incidental are covered in the allowance and there is no burden on the parents.

The introduction of new schemes and value adding to existing schemes is another milestone in Coalition Government's strong push for innovation, research led planning and development and creation of new knowledge for a knowledge-based society

I look forward to more young people accessing scholarships and grants to develop knowledge and skills to advance socio-economic progress of the country. My best wishes to the recipients.

God Bless Fiji

Foreword by the Hon. Minister for Education



Hon. Aseri Radrodro

As the Minister for Education, I have much pleasure in presenting the Tertiary Scholarships and Loans Service (TSLS) Scholarship and Policies Handbook for 2025-2026 Financial Year to the public of Fiji, targeting future recipients of Coalition Government funded scholarship, grant and loan schemes. The Coalition Government believes in quality education.

The Government is not just investing in the education, but also ensuring that there is high completion rate and quality graduates to have highly trained workforce for all facets of national development and growth.

Investing in human capital is a high priority given increasing global mobility of workers. The Coalition Government has allocated \$153m in the 2025-2026 National Budget. The number of scholarship and grant schemes have increased through innovative policies and diversification. The diversified schemes allow greater inclusivity, equity and access to potential recipients for studies in the national priority areas.

The Coalition Government is providing level playing field for the students from Rural and Maritime areas to ensure that they do not miss out on the degree program scholarships by bringing Equity in the Higher Education (Level 7) with minimum Cut-Off Mark Scholarship Scheme. The cut-off mark for students from rural and maritime zones will be reduced to 240. This will provide equity for rural & maritime school students considering the disparities in resources and other inherent challenges with remoteness.

The intent of the (TSLS) Scholarship and Policies Handbook for 2025-2026 is to provide all prospective students and the members of the public on twelve (14) schemes of scholarships, one (1) study loan scheme and three (3) schemes of study grants. The Handbook is aimed at disseminating the details of the schemes administered by TSLS with specific information on the eligibility criteria and the number of awards available in 2025-2026 financial year. This Handbook also provides relevant information such as scholarship schemes privileges, know how to apply, allowance process, equity-based allowance, learning enrichment, upgraded alumni and employer connect portal, travel and bond clearance portal, tsls guarantor clearance qr code kiosk system.

I am confident that stakeholders will regard this Handbook as a valuable tool for accessing information and supporting effective planning and decision-making. The digital version will be easily accessible and can be conveniently shared across platforms including Viber, Messenger, Instagram Chat, Twitter, LinkedIn, WhatsApp, and other community networks.

Vinaka Vakalevu, Dhanyawaad & Thank You

Message from the Chairperson and Executive Chair of TSLS



Ms. Ro Trimumu Kepa

On behalf of the Tertiary Scholarships and Loans Service (TSLS), I wish to express my heartfelt appreciation to the Government of Fiji, our Line Ministers, TSLS staff, stakeholders, and the former administration for their unwavering commitment to strengthening the tertiary education sector.

The recent enhancements to existing policies, introduction of new scholarship schemes, and the approved amendments to the TSLS Act of 2014 are testaments to strategic foresight, data-driven decision-making, and the incorporation of valuable feedback from both professionals and the wider public.

These developments reflect our shared vision of continuous improvement and are crucial in ensuring that TSLS remains responsive to the evolving needs of our nation.

The TSLS Board and Management remain steadfast in our commitment to enhancing accountability and transparency in the administration of taxpayer-funded grants, scholarships, and study loans. It is essential that both scholarship recipients and tertiary institutions fulfill their respective responsibilities. In this regard, I urge all stakeholders to demonstrate ethical reciprocity and uphold the spirit of partnership that underpins our shared goals.

This Handbook is designed to be a practical and accessible resource, guiding current and prospective scholarship recipients, institutions, and the general public in planning and managing tertiary education opportunities. As a nation that deeply values education, I encourage you to share this resource widely with your families and communities. Together, we can help prepare and empower the future leaders of Fiji.

Vinaka vakalevu.

About Us



Our Vision

To offer opportunities to Fijians through scholarships and study loans to empower them through knowledge, skills and talent for a prosperous Fiji.

Our Mission

Investing in tertiary education opportunities on equitable and equal basis to build Fiji's Human Capital.

Our Values

Respect Diversity

We recognize that the thoughts, feeling and backgrounds of others are as important as our own and believe in the transformative power of engaging many different perspectives.

Transparency & Accountability

Fostering trust and open communication that generates ownership and clarity which strengthens relationship between the organization, staff and its customers.

Empowerment

We believe in practicing positive reinforcement to instill greater trust in leadership allowing for creative expression in both staff and students.

Fairness

We hold high standards of character and integrity as the foundations upon which the institution is built.

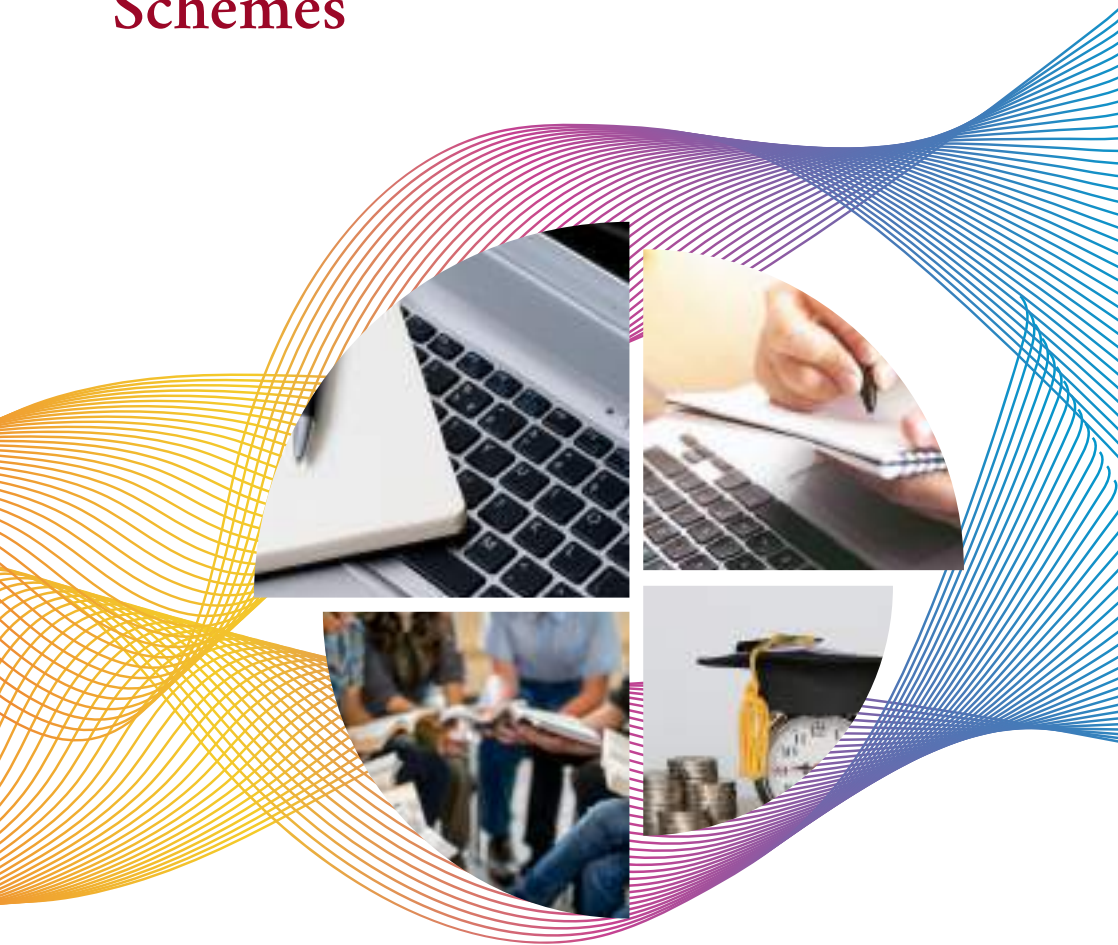
Service Excellence

Create a culture of customer centricity going beyond expectations and delivery industry leading experience that develops trust and improves satisfaction.

Empathy

We strive to build a culture of empathy that enables us to collaborate better and work efficiently to deliver outstanding results.

Executive Summary of Grants, Scholarships & Study Loan Schemes



Grants	
Scheme	Description
Micro Qualification /Competency Based Training Scheme	<p>This is to target early school dropouts, unemployed youths and adults to be trained in certain industry sector through micro credentials for semi-skilling purpose for duration of one (1) to three (3) months of competency-based training.</p> <p>Construction (300 Grants with allocation of \$600 per person per skill set). Skill Set: Basics of Tile laying, Painting, Plumbing, Block laying, Joinery and Cabinet Making.</p> <p>Tourism and Hospitality Industry (500 Grants with allocation of \$500 per person per skill set). Skill Set: Basics of House Keeping, Restaurant Service and Front Office Operations.</p> <p>Automotive (300 Grants with allocation of \$600 per person per skill set). Skill Set: Basics of Panel Beating and Automotive Painting.</p> <p>Traditional Handicraft Making (300 Grants with allocation of \$500 per person per skill set). Skill Set: Basics of Wood Carving, Tapa or Masi and Weaving.</p> <p>Performing Arts (200 Grants with allocation of \$500 per person per skill set). Skill Set: Basics of Dancing and Music.</p> <p>Community Tailoring (300 Grants with allocation of \$600 per person per skill set). Skill Set: Basics of Sewing.</p> <p>Womens Small Business Operations (100 Grants with allocation of \$500 per person per skill set). Skill Set: Basics of Book Keeping and Marketing.</p> <p>Vocational Literacy and Numeracy (1000 Grants with allocation of \$600 per person per skill set).</p>

Graduate Business Start Up Scheme	To assist TSLS sponsored graduates or final semester graduating students to undergo training and start a business. A grant of \$10,000 per student will be provided. This scheme will be managed and implemented by Fiji Commerce and Employers Federation.
Apprenticeship Scheme	To top-up \$2.00 an hour to the apprentice wage rate for maximum of 40 hours per week and up to 12 months.
Scholarships	
Scheme	Description
Masters & PhD by Research Scheme	This is an existing scheme for eligible local and New Zealand universities in national priority research areas.
Cost Sharing Overseas PhD Scholarships with Australian Universities Scheme	This is an existing scheme to partially support the students with airfares, stipend and associated cost except the Tuition Fee which shall be borne by agreed Australian universities.
Postgraduate Diploma In-Service Overseas Scheme	This is an existing scheme to support Post Graduate Diploma Programmes for specialisations under the national priority areas which are not offered locally.
High Achievers Higher Education (Level 7) Overseas Scheme	This is an existing scheme available for degree programmes under the national priority areas which are not offered locally.
High Achievers (Skills Qualifications) Overseas Scheme	This is a newly established scheme for Skills Qualifications (Diploma Level 5 & 6) programmes under the national priority areas which are not offered locally.
High Achievers Higher Education (Level 7) Local Scheme	This is an existing scheme available for programmes under the national priority areas which are offered locally.
High Achievers (Skills Qualification) Local Scheme	This is an existing scheme available for programmes at Certificate III, Certificate IV, Diploma Level 5 & 6 under the national priority areas which are offered locally.

Students with Special Needs Higher Education (Level 7) Scheme	This is a newly established scheme to support students with disabilities for Higher Education Degree (Level 7) programmes.
Students with Special Needs (Skills Qualifications) Scheme	This is a newly established scheme to support students with disabilities for Skills Qualifications (Certificate III, Certificate IV and Diploma Level 5) programmes.
In-Service Public Sector Scheme	This is an existing scheme available for employees in Public Sector Organisations for programmes under the national priority areas which are offered locally.
Higher Education (Level 7) with minimum Cut-Off Mark Scheme	This is an existing scheme available for (Level 7) programmes under the national priority areas which are offered locally with a minimum score of 250/400 in Year 13 Examination or GPA of 2.81/4.5 or 3.13/5.0.
Equity Based Higher Education (Level 7) with minimum Cut-Off Mark Scheme	This is newly established scheme to support students from rural and maritime zones for (Level 7) programmes under the national priority areas which are offered locally with a minimum score between 240/400 in Year 13 Examination or GPA of 2.70/4.5 or 3.0/5.0 and 249/400 in Year 13 Examination or GPA of 2.80/4.5 or 3.11/5.0.
Skills Qualification Based on Offer Letter Scheme	This is an existing scheme available for programmes at Certificate III, Certificate IV, Diploma Level 5 & 6 under the national priority areas which are offered locally.
Hardship Assistance Scheme	This is an existing scheme available for students who have privately attempted one (1) year of study on full academic load and have at least achieved 50% pass rate.
Study Loan	
Scheme	Description
In-Service Study Loan Scheme	This is an existing scheme available for employees in Public and Private Sector Organisations for programmes under the national priority areas which are offered locally.

Total Grants = 3141

Total Scholarship Awards + Study Loan = 9919

Schemes & Eligibility Criteria

2.1 Grants

2.2 Scholarships

2.3 Study Loan



2.1 GRANTS

2.1.1. Micro Qualification/ Competency Based Training Scheme (3000 Grants).

Eligibility Criteria

An applicant must:

1. be a Fiji citizen.
2. be ordinarily resident in Fiji for at least three (3) years before the award commencement date unless determined by the Service.
3. must obtain an offer letter from an eligible training provider or industry-based organisation with training facilities for the eligible grant skills set.
4. be at least 17 years at the time of application.
5. not be in any form of employment during the period of sponsorship.
6. not be an existing TSLS sponsored student or graduate (on active bond service) or sponsored through any other agency.

Note:

1. be an active entrepreneur for Womens Small Business Operations skills set.

2.1.2. Graduate Business Start Up Scheme (41 Grants).

Eligibility Criteria

An applicant must:

1. be a Fiji citizen.
2. be ordinarily resident in Fiji for at least three (3) years before the award commencement date unless determined by the Service.
3. be a sponsored graduate or a final semester graduating student.
4. be less than 30 years at the time of application.
5. meet eligibility and selection criteria set by Fiji Commerce & Employers Federation.

2.1.3. Apprenticeship (100 Grants).

Eligibility Criteria

An applicant must:

1. be a Fiji citizen.
2. be ordinarily resident in Fiji for at least three (3) years before the award commencement date unless determined by the Service.
3. secure an apprenticeship agreement with the employer and the provider.
4. be actively enrolled with an eligible tertiary education institution.
5. not be an existing TSLS sponsored student or graduate (on active bond service) or sponsored through any other agency.

2.2 SCHOLARSHIPS

2.2.1. Scholarships for Masters & PhD by Research Scheme - 30 Awards (20 for Masters (15 Local and 5 in New Zealand) and 10 for PhD (7 Local and 3 in New Zealand)).

Eligibility Criteria

An applicant must:

1. be a Fiji citizen.
2. be ordinarily resident in Fiji for at least three (3) years before the award commencement date unless determined by the Service.
3. have the research proposal approved and obtain a candidature confirmation letter for full time mode unless determined by the Service or arranged with employer.
4. demonstrate the direct and applied relevance of the research study towards Fiji's workforce needs and development.
5. be less than 50 years at the time of application.
6. not be an existing TSLS sponsored student or graduate (on active bond service) or sponsored through any other agency.

Scheme Priority Disciplines

1. Medical & Health Services.
2. Engineering Services.
3. Climate Change/Environmental Science.
4. Marine Science.
5. Forestry.
6. Public Policy and Analysis.
7. Economic Modelling and Policies.
8. Public Financing.
9. Inclusive Education.
10. Information Technology Services.
11. Social Science.
12. Border Security.

Scheme Eligible Tertiary Education Institutions - Overseas

1. Auckland University of Technology.
2. Massey University.
3. The University of Auckland.
4. University of Canterbury.
5. University of Waikato.
6. Victoria University of Wellington.

Scheme Eligible Tertiary Education Institutions - Local

1. Fiji National University.
2. The University of the South Pacific.
3. University of Fiji.



2.2.2. Cost Sharing Overseas PhD Scholarships Scheme with Australian Universities (39 Awards)

Eligibility Criteria

An applicant must:

1. be a Fiji citizen.
2. be ordinarily resident in Fiji for at least three (3) years before the award commencement date unless determined by the Service.
3. secure an offer letter or candidature based on eligible university's requirements for full time mode unless determined by the Service or arranged with employer.
4. demonstrate the direct and applied relevance of the research study towards Fiji's workforce needs and development.
5. be less than 50 years at the time of application.
6. not be an existing TSLS sponsored student or graduate (on active bond service) or sponsored through any other agency.

Scheme Priority Disciplines

1. Medical & Health Services.
2. Engineering Services.
3. Climate Change/Environmental Science.
4. Marine Science.
5. Forestry.
6. Public Policy and Analysis.
7. Economic Modelling and Policies.
8. Public Financing.
9. Inclusive Education.
10. Information Technology Services.
11. Social Science.
12. Border Security.

Scheme Eligible Tertiary Education Institutions

1. CQ University Australia.
2. Griffith University.
3. Monash University.
4. Queensland University of Technology.
5. Swinburne University of Technology.
6. University of Newcastle.
7. University of New South Wales.
8. University of Queensland.
9. Western Sydney University.



2.2.3. Scholarships for Postgraduate Diploma In-Service Overseas Scheme (20 Awards)

Eligibility Criteria

An applicant must:

1. be a Fiji citizen.
2. be ordinarily resident in Fiji for at least three (3) years before the award commencement date unless determined by the Service.
3. be employed in a Public or Private Sector organisation.
4. be nominated by the respective Permanent Secretary or Head of the organisation for sponsorship.
5. secure a place at an eligible institution by means of a final offer letter.
6. not be an existing TSLS sponsored student or graduate (on active bond service except for medical general practitioners who may be eligible after 5 years of service) or sponsored through any other agency.

Scheme Priority Disciplines and Programmes

Disciplines	Post Graduate Diploma Programmes
Medicine & Health Services	<ul style="list-style-type: none">• Radiology• Critical Care/Acute Care in Nursing• Rehabilitation Medicine• Cardiologist• Clinical Psychology/Counselor
Engineering Services and Management	<ul style="list-style-type: none">• Structural Engineering• Road Pavement and Highway Hydrology• Geotechnical Engineering• Water and Sewerage• Aviation Management
Agriculture, Forestry & Fisheries	<ul style="list-style-type: none">• Veterinary Science
Arts	<ul style="list-style-type: none">• Legislative Drafting

Scheme Eligible Tertiary Education Institutions

1. Auckland University of Technology.
2. CQ University Australia.
3. Griffith University.
4. Massey University.
5. Monash University.
6. Queensland University of Technology.
7. Swinburne University of Technology.
8. The University of Auckland.
9. University of Canberra.
10. University of Canterbury.
11. University of Newcastle.
12. University of New South Wales.
13. University of Queensland.
14. University of Sydney.
15. University of Waikato.
16. Victoria University of Wellington.
17. Western Sydney University.

2.2.4. Scholarships for High Achievers Higher Education (Level 7) Overseas Scheme (80 Awards).

Eligibility Criteria

An applicant must:

1. be a Fiji citizen.
2. be ordinarily resident in Fiji for at least three (3) years before the award commencement date unless determined by the Service.
3. have completed Year 13 in 2025 or determined by the Service at the time of application. An applicant who has completed Foundation Studies or repeats Year 13 is not eligible to apply for the Scheme.
4. score 340/400 and above in Year 13 examination and apply in a listed programme for Overseas Scholarship.
5. secure a place at an eligible institution by means of a final offer letter.
6. not be an existing TSLS sponsored student or graduate (on active bond service) or sponsored through any other agency.

Scheme Priority Disciplines and Programmes		
Disciplines	Programmes	Awards
Engineering Services	Bachelor of Engineering: Energy Engineering, Hydrology Engineering, Manufacturing Engineering, Road Engineering, Structural Engineering, Building Service Engineering, Plant Engineering, Mining Engineering, Environmental Engineering.	10
Medical & Health Services	Bachelor's Degree in: Speech Therapist, Sports Medicine, Sports Science, Prosthetics and Orthosis.	10
Agriculture, Forestry & Fisheries	Bachelor's Degree in: Veterinary Sciences, Aquaculture, Fish Technology, Plant Pathologist, Biosecurity, Seafood Science and Technology, Virologist-Livestock, Microbiologist, Agricultural Irrigation.	10
Information Technology Services	Bachelor's degree in: Software Development/Engineering, Cyber Security, Geographical Information System, Business Analytics/Informatics, Geological Information System, Artificial Intelligence and Data Science.	20
Science and Innovation	Bachelor's Degree in: Meteorology.	10
Business and Commerce	Bachelor of Commerce in: Productivity Analyst, Actuarial Finance/Science, Public Policy Specialist, Project Management, Forensic Accounting.	10
Special Areas	Forensic Science, Quantity Surveying, Architectural Design, Special Child Studies, Criminology and Criminal Justice.	10

Scheme Eligible Tertiary Education Institutions

1. Auckland University of Technology.
2. CQ University Australia.
3. Griffith University.
4. Massey University.
5. Monash University.
6. Queensland University of Technology.
7. Swinburne University of Technology.
8. The University of Auckland.
9. University of Canberra.
10. University of Canterbury.
11. University of Newcastle.
12. University of New South Wales.
13. University of Queensland.
14. University of Sydney.
15. University of Waikato.
16. Victoria University of Wellington.
17. Western Sydney University.



2.2.5. Scholarships for High Achievers (Skills Qualification) Overseas Scheme (10 Awards).

Eligibility Criteria

An applicant must:

1. be a Fiji citizen.
2. be ordinarily resident in Fiji for at least three (3) years before the award commencement date unless determined by the Service.
3. be in Year 13 in 2025 or such equivalent studies as determined by TSLS at the time of application. An applicant who has completed Foundation Studies or repeats Year 13 is not eligible to apply for the Scheme.
4. score 300/400 and above in Year 13 examination and apply in a listed programme for Overseas Scholarship.
5. secure a place at an eligible institution by means of a final offer letter.
6. not be an existing TSLS sponsored student or graduate (on active bond service) or sponsored through any other agency.

Scheme Priority Disciplines and Programmes

Disciplines	Diploma Level 5 and 6 Programmes
Engineering Services	<ul style="list-style-type: none">• Water and Sewerage• Manufacturing• Hydrology• Aviation Management• Building Design
Medical & Health Services	<ul style="list-style-type: none">• Rehabilitation (Drugs and Substance)
Science and Innovation	<ul style="list-style-type: none">• Nautical Science
Information Technology Services	<ul style="list-style-type: none">• Advanced Networking – Cloud Architecture• Advanced Programming• Gaming Development
Business, Commerce & Retails Services	<ul style="list-style-type: none">• Retail Management

Scheme Eligible Tertiary Education Institutions

1. CQ University Australia.
2. Swinburne University of Technology.
3. University of Queensland.
4. University of Sydney.
5. TAFE Queensland.
6. TAFE New South Wales.

2.2.6. Scholarships for High Achievers Higher Education (Level 7) Local Scheme (700 Awards)

Eligibility Criteria

An applicant must:

1. be a Fiji citizen.
2. be ordinarily resident in Fiji for at least three (3) years before the award commencement date unless determined by the Service.
3. be in Year 13 in 2025 or such equivalent studies as determined by TSLS at the time of application. An applicant who has completed Foundation Studies is not eligible to apply for the Scheme. An applicant who has repeated Year 13 in 2025 or prior is not eligible to apply for the Scheme except for MBBS. An applicant who has repeated Year 13 in 2025 or prior and applies for MBBS, must have scored 250 plus in the first attempt in Year 13, and 365 plus in the subsequent attempt.
4. secure a place at an eligible institution by means of a final offer letter.
5. not be an existing TSLS sponsored student or graduate (on active bond service) or sponsored through any other agency.
6. pass in interview conducted by Ministry of Education is compulsory for Teacher Training Programmes despite meeting the Cut-Off marks.

Scheme Priority Disciplines and Programmes

Engineering Services			
Programmes	No. of Awards	Qualifying Cut-Off Mark for Non-Rural and Maritime Students	Qualifying Cut-Off Mark for Rural and Maritime Students
Bachelor's Degree in: Civil Engineering, Electrical/Electronic Engineering, Mechanical Engineering.	30	Aggregate Score of 330/400 in Year 13 with a pass in English, Mathematics, Physics and one more subject meeting the TEI's requirements.	Aggregate Score of 320/400 in Year 13 with a pass in English, Mathematics, Physics and one more subject meeting the TEI's requirements.
Medical & Health Services			
Programmes	No. of Awards	Qualifying Cut-Off Mark for Non-Rural and Maritime Students	Qualifying Cut-Off Mark for Rural and Maritime Students
Bachelor's Degree in: Dietetics & Nutrition, Nursing, Public Health, Medical Lab Sciences, Physiotherapy, Pharmacy, Medical Imaging Science, MBBS and BDS.	155 (of which 60 is MBBS, 5 BDS and 50 Nursing)	Aggregate score of 330/400 in Year 13 with a pass in English and the area specialization subjects. For MBBS Cut-Off will be 350 in Year 13 (First Attempt) Repeaters- Cut-Off will be 365. For Nursing Cut-Off will be 310 in Year 13.	Aggregate score of 320/400 in Year 13 with a pass in English and the area specialization subjects. For MBBS Cut-Off will be 340 in Year 13 (First Attempt) Repeaters- Cut-Off will be 365. For Nursing Cut-Off will be 300 in Year 13.

Scheme Priority Disciplines and Programmes

Agriculture, Forestry & Fisheries			
Programmes	No. of Awards	Qualifying Cut-Off Mark for Non-Rural and Maritime Students	Qualifying Cut-Off Mark for Rural and Maritime Students
Bachelor's Degree in: Agriculture, Agricultural Engineering, Agribusiness, Forestry, Fisheries, Agriculture Economics, Animal Science.	30	Aggregate Score of 310/400 in Year 13 with a pass in English and Agriculture.	Aggregate Score of 300/400 in Year 13 with a pass in English and Agriculture.
Arts			
Programmes	No. of Awards	Qualifying Cut-Off Mark for Non-Rural and Maritime Students	Qualifying Cut-Off Mark for Rural and Maritime Students
Bachelor's Degree in: Journalism, Media and Communication, Sports Education and Exercise Science.	20	Aggregate Score of 310/400 in Year 13 with a pass in English.	Aggregate Score of 300/400 in Year 13 with a pass in English.
Information Technology Services			
Programmes	No. of Awards	Qualifying Cut-Off Mark for Non-Rural and Maritime Students	Qualifying Cut-Off Mark for Rural and Maritime Students
Bachelor's degree in: Telecommunications Networking, Networks and Security, Software Development, Programming, Information System, Computing Science, Information Technology.	130	Aggregate Score of 320/400 in Year 13 with a pass in English and Mathematics.	Aggregate Score of 310/400 in Year 13 with a pass in English and Mathematics.

Scheme Priority Disciplines and Programmes

Social Work			
Programmes	No. of Awards	Qualifying Cut-Off Mark for Non-Rural and Maritime Students	Qualifying Cut-Off Mark for Rural and Maritime Students
Bachelor's Degree in: Social Work, Social Policy and Policy Administration and Psychology.	20	Aggregate score of 310/400 in Year 13 with a pass in English.	Aggregate score of 300/400 in Year 13 with a pass in English.
Science and Innovation			
Programmes	No. of Awards	Qualifying Cut-Off Mark for Non-Rural and Maritime Students	Qualifying Cut-Off Mark for Rural and Maritime Students
Bachelor's Degree in: Environmental Science, Environmental Management, Marine Science, Marine Management.	40	Aggregate Score of 310/400 in Year 13 with a pass in English.	Aggregate Score of 300/400 in Year 13 with a pass in English.
Land/Town Planning			
Programmes	No. of Awards	Qualifying Cut-Off Mark for Non-Rural and Maritime Students	Qualifying Cut-Off Mark for Rural and Maritime Students
Bachelor's Degree in: Land Surveying, Urban and Regional Planning, Real Estate and Property Management, Geo-Spatial Science, GIS/Land Acquisition and Real Estate and Property Valuation.	40	Aggregate Score of 310/400 in Year 13 with a pass in English.	Aggregate Score of 300/400 in Year 13 with a pass in English.

Scheme Priority Disciplines and Programmes

Business and Commerce			
Programmes	No. of Awards	Qualifying Cut-Off Mark for Non-Rural and Maritime Students	Qualifying Cut-Off Mark for Rural and Maritime Students
Bachelor's Degree in: Accounting, Economics, Finance, Official Statistics, Information Systems, Professional Accounting, HRM and Industrial Relations, Public Administration and Management.	110	Aggregate score of 340/400 in Year 13 with a pass in English and Mathematics for Accounting, Economics, Finance and Official Statistics.	Aggregate score of 330/400 in Year 13 with a pass in English and Mathematics for Accounting, Economics, Finance and Official Statistics.
Education			
Programmes	No. of Awards	Qualifying Cut-Off Mark for Non-Rural and Maritime Students	Qualifying Cut-Off Mark for Rural and Maritime Students
Bachelor of Education Secondary (Pre-Service) Mathematics, Physics and Computer Science (35). Industrial Arts (20). Bachelor of Education Primary (60). Bachelor of Education ECE (10).	125	Aggregate score of 310/400 In Year 13 with a pass in English and the subject area specialization.	Aggregate score of 300/400 In Year 13 with a pass in English and the subject area specialization.

Scheme Eligible Tertiary Education Institutions

1. Corpus Christi Teachers College.
2. Fiji National University.
3. Fulton Adventist University College.
4. Sangam Institute of Technology.
5. The University of the South Pacific.
6. University of Fiji.

2.2.7. Scholarships for High Achievers (Skills Qualifications) Local Scheme (250 Awards).

Eligibility Criteria

An applicant must:

1. be a Fiji citizen.
2. be ordinarily resident in Fiji for at least three (3) years before the award commencement date unless determined by the Service.
3. have completed and passed at least Year 13 Examination in 2025 with a minimum score of 250/400 or 240/400 if from rural and maritime school or equivalent as determined by TSLS. An applicant who has completed Foundation Studies is not eligible to apply for the scheme. An applicant who has repeated Year 13 in 2025 or prior is not eligible to apply for the scheme except for Pilot Training.
4. have completed and passed at least Year 12 Examination in 2025 with a minimum score of 270/400 or 260/400 if from rural and maritime school or equivalent as determined by TSLS. An applicant who has completed Preliminary Studies and repeats Year 12 is not eligible to apply for the Scheme.
5. for Commercial Pilot Training Programme have completed Year 13 Examination in 2025 with a minimum score of 310/400 (Year 13 first attempt) and have scored 70% and above in English, Pure Mathematics and Physics. An applicant who has repeated Year 13 in 2025 or prior and applies for Pilot Training, must have scored 250 plus in the first attempt in Year 13, and 335 plus in the subsequent attempt.
6. secure a place at an eligible institution by means of a final offer letter.
7. not be an existing TSLS sponsored student or graduate (on active bond service) or sponsored through any other agency.
8. A pass in Fiji Airways assessment is compulsory for Pilot Training scholarships despite meeting the Cut-Off marks.

Scheme Priority Disciplines and Programmes

Discipline	Programmes	Award
Agriculture, Forestry & Fisheries	Agricultural Engineering, Horticulture, Agro Forestry, Animal Husbandry, Applied Fisheries, Aquaculture, Forestry, Wood Processing and Value Adding.	10
Hotel and Tourism	Baking & Patisserie, Cookery, Front Office Operations, Housekeeping & Accommodation Operations, Restaurant Services, Hospitality and Hotel Management, Culinary Art, Restaurant Operations, Tourism Studies, Food and Beverage, Kitchen Operations.	30
Business, Commerce & Retails Services	Customs and Outsourcing Operations.	10

Scheme Priority Disciplines and Programmes

Discipline	Programmes	Award
Engineering Services	Fitting and Machining, Plant Maintenance Engineering, Fabrication and Welding, Aircraft Maintenance Engineering (Avionics), Aircraft Maintenance Engineering (Mechanical), Manufacturing Engineering, Civil Engineering, Renewable and Sustainable Engineering, Plant Engineering, Mechanical Engineering, Transport Technology and Management (Roads).	30
Automotive and Heavy Plants	Automotive Body Works, Automotive Engineering, Automotive Engineering (Automotive Electrical and Electronics), Automotive Engineering Heavy Commercial Vehicle, Automotive Engineering Heavy Mobile Plant, Automotive Engineering Light Motor Vehicle, Automotive Engineering Panel and Paint, Automotive Mechanic.	25
Medical & Health Para-Professionals	Enrolled Nursing, Biomedical Engineering, Ageing and Community Support Care, Dental Assisting, Clinical Laboratory Technology, Community Nutrition.	15
Construction	Carpentry, Joinery and Cabinet Making, Plumbing and Sheetmetal, Quantity Surveying, Architectural Drafting.	25
Electrical	Electrical Engineering, Electronics Engineering, Refrigeration and Airconditioning, Fitting & Machining, Electronics/ Instrumentation & Control, Outdoor Powered Equipment.	20
Fashion and Beauty Therapy	Hairdressing, Beauty Therapy, Fashion.	5
Mining	Geology, Mining and Quarrying.	5
Information Technology Services	Programming, Software Development, Website Designing, Graphic Design Electronics/Telecommunication & Networking, Structured Cabling and Networking.	10
Creative Arts and Talents	Film & Television Production, Graphic Arts, Music, Sports Science.	10

Scheme Priority Disciplines and Programmes

Discipline	Programmes	Award
Land/Town Planning	Land Surveying.	10
Science and Innovation	Marine Engineering and Nautical Science.	10
Education	Early Childhood Education, Counseling.	15
Pilot Training	Commercial Pilot Training.	20

Scheme Eligible Tertiary Education Institutions

1. Advance Aviation Training (PTE) Limited.
2. Caregivers Training Institute Pte Limited.
3. Centre for Applied Technology Development.
4. Corpus Christi Teachers College.
5. Fiji National University.
6. Keshals Business Education Institute.
7. Montfort Boys Town.
8. Navuso Agricultural Technical Institute.
9. Pacific Flying School.
10. Pacific Polytechnic Limited
11. Pivot Point.
12. Service Pro.
13. SPA Academy Fiji.
14. The University of the South Pacific.
15. Vishan Institute of Technology.

2.2.8. Scholarships for Students with Special Needs Higher Education (Level 7) Scheme (20 Awards).

Eligibility Criteria

An applicant must:

1. be a Fiji citizen.
2. be ordinarily resident in Fiji for at least three (3) years before the award commencement date unless determined by the Service.
3. be able to secure a final offer letter in an eligible funded programme (Level 7) and demonstrated tertiary study ability and endorsed by National Council for Persons with Disabilities.
4. not be an existing TSLS sponsored student or graduate (on active bond service) or sponsored through any other agency.

Scheme Eligible Tertiary Education Institutions

1. Corpus Christi Teachers College.
2. Fiji National University.
3. Fulton Adventist University College.
4. Sangam Institute of Technology.
5. The University of the South Pacific.
6. University of Fiji.



2.2.9. Scholarships for Students with Special Needs (Skills Qualification) Scheme (20 Awards).

Eligibility Criteria

An applicant must:

1. be a Fiji citizen.
2. be ordinarily resident in Fiji for at least three (3) years before the award commencement date unless determined by the Service.
3. be able to secure a final offer letter in an eligible funded programme (Certificate III, Certificate IV and Diploma Level 5) and demonstrated tertiary study ability and endorsed by National Council for Persons with Disabilities.
4. not be an existing TSLS sponsored student or graduate (on active bond service) or sponsored through any other agency.

Scheme Eligible Tertiary Education Institutions

1. Caregivers Training Institute Pte Limited.
2. Centre for Applied Technology Development.
3. Corpus Christi Teachers College.
4. Fiji National University.
5. Keshals Business Education Institute.
6. Montfort Boys Town.
7. Navuso Agricultural Technical Institute.
8. Pacific Polytechnic Limited
9. Pivot Point.
10. Service Pro.
11. SPA Academy Fiji.
12. The University of the South Pacific.
13. Vishan Institute of Technology.
14. Australian Pacific Management & Training Fiji



2.2.10. Scholarships for In-Service Public Sector Scheme – (50 Awards)

Eligibility Criteria

An applicant must:

1. be a Fiji citizen.
2. be ordinarily resident in Fiji for at least three (3) years before the award commencement date unless determined by the Service.
3. be employed in a Public Sector organisation.
4. be nominated by the respective Permanent Secretary or Head of the organisation for sponsorship.
5. secure a place at an eligible institution by means of a final offer letter.
6. not be an existing TSLS sponsored student or graduate (on active bond service except for medical general practitioners who may be eligible after 5 years of service) or sponsored through any other agency.
7. be paid Tuition only.

Scheme Priority Disciplines and Programmes

Disciplines	Area of Study	Quota	Level of Study
Medicine & Health Services	Dermatology	2	Post-Graduate Diploma
	Anesthesia	2	
	Epidemiology	2	
	Midwifery	2	
	Obstetrics and Gynecology	3	
	Emergency Nursing	2	
	Surgery	2	
	Pathology	2	
	Mental Health	3	
	Pediatrics	3	
	Internal Medicine	2	
	Emergency Medicine	2	
	Oral Surgery	2	
	Community Health Nursing	2	
	Nursing Leadership and Management	2	
	Eye Care	2	

Scheme Priority Disciplines and Programmes

Disciplines	Area of Study	Quota	Level of Study
Education	Special and Inclusive Education	4	Degree (Level 7)
	Early Childhood Education	4	Degree (Level 7)
	Counselling and Psychology	3	Diploma (Level 5 and 6) or Degree (Level 7)
Social Work	Social Policy Administration	2	Post-Graduate Diploma
Post-Graduate Diploma	Climate Change	2	Post-Graduate Diploma

Scheme Eligible Tertiary Education Institutions

1. Fiji National University.
2. Fulton Adventist University College.
3. Sangam Institute of Technology.
4. The University of the South Pacific.
5. University of Fiji.



2.2.11. Scholarships for Higher Education (Level 7) With Minimum Cut Off Mark Scheme (3000 Awards).

Eligibility Criteria

An applicant must:

1. be a Fiji citizen.
2. be ordinarily resident in Fiji for at least three (3) years before the award commencement date unless determined by the Service.
3. have successfully completed Year 13 Examination in 2011 or Foundation Studies thereafter and scored a minimum mark as stated in the table below.
4. secure a place at an eligible institution by means of a final offer letter.
5. be an existing TSLS sponsored student or graduate (on active bond service) or sponsored through any other agency.
6. not have a combined parental income of more than \$150,000 or business net profit of more than \$20,000 unless allowed by means testing.
7. pass in interview conducted by Ministry of Education is compulsory for Teacher Training Programmes despite meeting the Cut-Off marks.

Scheme Priority Disciplines and Programmes

Engineering Services		
Programmes	Awards	Qualifying Cut-Off Mark
Level 7 Certificate, Level 7 Diploma and Level 7 Degree in Civil Engineering, Electrical/Electronic Engineering, Mechanical Engineering, Mechanical Engineering & Physics, Electrical/Electronic Engineering & Physics, Electrical/Electronic Engineering & Computer Science, Instrumentation & Control System, Electronic/Instrumentation & Control.	120	300 Marks or GPA of 3.38/4.5 or 3.75/5.0.

Medical & Health Services		
Programmes	Awards	Qualifying Cut-Off Mark
Level 7 Certificate, Level 7 Diploma and Level 7 Degree in: Dietetics & Nutrition, Health Environment, Nursing, Health Promotion, Health Services Management, Medical Imaging Science, Medical Lab Sciences, Pharmacy, Public Health & Primary Health Care and Physiotherapy.	500 of which 350 is for Nursing.	250 Marks or GPA of 2.81/4.5 or 3.13/5.0.

Scheme Priority Disciplines and Programmes

Agriculture, Forestry & Fisheries		
Programmes	Awards	Qualifying Cut-Off Mark
Level 7 Certificate, Level 7 Diploma and Level 7 Degree in Agriculture, Agricultural Engineering, Agribusiness, Veterinary Sciences, Forestry, Fisheries, Aquaculture, Fish Technology and Food Technology, Sustainable Fisheries, Animal Science, Animal Husbandry.	100	250 Marks or GPA of 2.81/4.5 or 3.13/5.0.

Information Technology Services		
Programmes	Awards	Qualifying Cut-Off Mark
Level 7 Certificate, Level 7 Diploma and Level 7 Degree in Telecommunications Networking, Cyber Security, Networks and Security, Software Development/Engineering, Programming, Library Sciences, Information System, Computing Science, Information Technology and Applied Computing, Computer Studies, Telecommunication & Networking.	240	250 Marks or GPA of 2.81/4.5 or 3.13/5.0.

Social Work		
Programmes	Awards	Qualifying Cut-Off Mark
Level 7 Certificate, Level 7 Diploma and Level 7 Degree in Social Work, Social Policy and Policy Administration, Social & Community Work, Sociology, Applied Social Science, Psychology.	100	250 Marks or GPA of 2.81/4.5 or 3.13/5.0.

Scheme Priority Disciplines and Programmes

Science and Innovation		
Programmes	Awards	Qualifying Cut-Off Mark
Level 7 Certificate, Level 7 Diploma and Level 7 Degree in Environmental Science, Environmental Management, Climate Change, Marine Management, Ocean Resources Management, Ocean Resource Management & Policy, Marine Science, Mathematics, Physics, Chemistry, Biology, Food Technology.	130	250 Marks or GPA of 2.81/4.5 or 3.13/5.0.

Land/Town Planning		
Programmes	Awards	Qualifying Cut-Off Mark
Level 7 Certificate, Level 7 Diploma and Level 7 Degree in Land Surveying, Urban and Regional Planning, Real Estate and Property Management, Geo-Spatial Science, GIS/Land Acquisition, Real Estate and Property Valuation, Land Management, Land Management & Development.	100	250 Marks or GPA of 2.81/4.5 or 3.13/5.0.

Business and Commerce		
Programmes	Awards	Qualifying Cut-Off Mark
Level 7 Certificate, Level 7 Diploma and Level 7 Degree in Accounting, Economics, Finance, Official Statistics, Project Planning & Management, Property Management and Valuation, Occupational Health and Safety, Information Systems, Professional Accounting, HRM and Industrial Relations, Public Administration and Management, Business Studies, Management, Marketing, Business Informatics, Agricultural Economics & Agribusiness, HRM & ER, International Business & Marketing, Banking and Library.	400	280 Marks or GPA of 3.15/4.5 or 3.50/5.0.

Scheme Priority Disciplines and Programmes

Education		
Programmes	Awards	Qualifying Cut-Off Mark
Level 7 Certificate, Level 7 in Diploma and Level 7 Degree in Counselling.	20	250 Marks or GPA of 2.81/4.5 or 3.13/5.0.
Level 7 Certificate, Level 7 Diploma and Level 7 Degree in Special and Inclusive Education.	20	
Level 7 Certificate, Level 7 Diploma and Level 7 Degree in Early Childhood Education.	60	
Level 7 Certificate, Level 7 Diploma and Level 7 Degree in Primary Education.	350	
Level 7 Certificate, Level 7 Diploma and Level 7 Degree in Secondary Education: Mathematics & Physics, Computer Science.	140	
Level 7 Certificate, Level 7 Diploma and Level 7 Degree in Secondary Education: Industrial Arts.	100	
Level 7 Certificate, Level 7 Diploma and Level 7 Degree in Secondary Education: Accounting, Economics, Computer Science, Technology.	30	
Level 7 Certificate, Level 7 Diploma and Level 7 Degree in Secondary Education: History, Geography.	50	
Level 7 Certificate, Level 7 Diploma and Level 7 Degree in Secondary Education: Biology, Chemistry, Home Economics, Food & Nutrition.	60	
Level 7 Certificate, Level 7 Diploma and Level 7 Degree in Secondary Education: English Language & Literature, Hindi Language & Indian Culture, i-Taukei Studies, i-Taukei/Fijian Language, Literature & Language, Hindi Studies, English.	80	
Level 7 Certificate, Level 7 Diploma and Level 7 Degree in Secondary Education: Physical Education & Music, Physical Education/Art & Craft	80	
Level 7 Certificate, Level 7 Diploma and Level 7 Degree in Secondary Education: Agriculture.	50	

Scheme Priority Disciplines and Programmes

Arts		
Programmes	Awards	Qualifying Cut-Off Mark
Level 7 Certificate, Level 7 Diploma and Level 7 Degree in: Language, Literature & Culture, Hindi Language & Indian Culture, i-Taukei Language, Hindi Language, Justice, Policing, Population Studies & Demography, Multilingual Studies, Media & Communication, Media Studies and Journalism, Police Management, Prosecution, History, Linguistic, Heritage and Arts, Politics, Geography, Non-Formal Education, Sports Education and Exercise Science.	150	250 Marks or GPA of 2.81/4.5 or 3.13/5.0.
LLB including PDLP/GDLP.	30	300 Marks or GPA of 3.38/4.5 or 3.75/5.0.

Tourism		
Programmes	Awards	Qualifying Cut-Off Mark
Level 7 Certificate, Level 7 Diploma and Level 7 Degree in: Tourism Studies, Hotel Management, Tourism & Hospitality, Tourism Hospitality Management, Tourism Management, Hospitality & Hotel Management.	90	250 Marks or GPA of 2.81/4.5 or 3.13/5.0.

Scheme Eligible Tertiary Education Institutions

1. Corpus Christi Teachers College.
2. Fiji National University.
3. Fulton Adventist University College.
4. Sangam Institute of Technology.
5. The University of the South Pacific.
6. University of Fiji.

2.2.12. Scholarships for Equity Based Higher Education (Level 7) With Minimum Cut Off Mark Scheme (500 Awards).

Eligibility Criteria

An applicant must:

1. be a Fiji citizen.
2. be ordinarily resident in Fiji for at least three (3) years before the award commencement date unless determined by the Service.
3. have successfully completed Year 13 Examination in 2011 or Foundation Studies thereafter and scored a minimum mark as stated in the table below.
4. be from a rural and maritime school under the clarification as per Ministry of Education zoning.
5. secure a place at an eligible institution by means of a final offer letter.
6. not be an existing TSLs sponsored student or graduate (on active bond service) or sponsored through any other agency.
7. not have a combined parental income of more than \$150,000 or business net profit of more than \$20,000 unless allowed by means testing.
8. pass in interview conducted by Ministry of Education is compulsory for Teacher Training Programmes despite meeting the Cut-Off marks.

Scheme Priority Disciplines and Programmes

Medical & Health Services		
Programmes	Awards	Qualifying Cut-Off Mark
Level 7 Certificate, Level 7 Diploma and Level 7 Degree in: Dietetics & Nutrition, Health Environment, Nursing, Health Promotion, Health Services Management, Medical Imaging Science, Medical Lab Sciences, Pharmacy, Public Health & Primary Health Care and Physiotherapy.	40	(240 – 249) Marks or GPA of (2.70 – 2.80)/4.5 or (3.0 – 3.11)/5.0.

Agriculture, Forestry & Fisheries		
Programmes	Awards	Qualifying Cut-Off Mark
Level 7 Certificate, Level 7 Diploma and Level 7 Degree in Agriculture, Agricultural Engineering, Agribusiness, Veterinary Sciences, Forestry, Fisheries, Aquaculture, Fish Technology and Food Technology, Sustainable Fisheries, Animal Science, Animal Husbandry.	30	(240 – 249) Marks or GPA of (2.70 – 2.80)/4.5 or (3.0 – 3.11)/5.0.

Scheme Priority Disciplines and Programmes

Information Technology Services		
Programmes	Awards	Qualifying Cut-Off Mark
Level 7 Certificate, Level 7 Diploma and Level 7 Degree in Telecommunications Networking, Cyber Security, Networks and Security, Software Development/Engineering, Programming, Library Sciences, Information System, Computing Science, Information Technology and Applied Computing, Computer Studies, Telecommunication & Networking.	70	(240 – 249) Marks or GPA of (2.70 – 2.80)/4.5 or (3.0 – 3.11)/5.0.

Social Work		
Programmes	Awards	Qualifying Cut-Off Mark
Level 7 Certificate, Level 7 Diploma and Level 7 Degree in Social Work, Social Policy and Policy Administration, Social & Community Work, Sociology, Applied Social Science, Psychology.	20	(240 – 249) Marks or GPA of (2.70 – 2.80)/4.5 or (3.0 – 3.11)/5.0.

Science and Innovation		
Programmes	Awards	Qualifying Cut-Off Mark
Level 7 Certificate, Level 7 Diploma and Level 7 Degree in Environmental Science, Environmental Management, Climate Change, Marine Management, Ocean Resources Management, Ocean Resource Management & Policy, Marine Science, Mathematics, Physics, Chemistry, Biology, Food Technology.	40	(240 – 249) Marks or GPA of (2.70 – 2.80)/4.5 or (3.0 – 3.11)/5.0.

Land/Town Planning		
Programmes	Awards	Qualifying Cut-Off Mark
Level 7 Certificate, Level 7 Diploma and Level 7 Degree in Land Surveying, Urban and Regional Planning, Real Estate and Property Management, Geo-Spatial Science, GIS/Land Acquisition, Real Estate and Property Valuation, Land Management, Land Management & Development.	30	(240 – 249) Marks or GPA of (2.70 – 2.80)/4.5 or (3.0 – 3.11)/5.0.

Scheme Priority Disciplines and Programmes

Education		
Programmes	Awards	Qualifying Cut-Off Mark
Level 7 Certificate, Level 7 Diploma and Level 7 Degree in Counselling.	5	(240 – 249) Marks or GPA of (2.70 – 2.80)/4.5 or (3.0 – 3.11)/5.0.
Level 7 Certificate, Level 7 Diploma and Level 7 Degree in Special and Inclusive Education.	5	
Level 7 Certificate, Level 7 Diploma and Level 7 Degree in Early Childhood Education.	20	
Level 7 Certificate, Level 7 Diploma and Level 7 Degree in Primary Education.	40	
Level 7 Certificate, Level 7 Diploma and Level 7 Degree in Secondary Education: Mathematics & Physics, Computer Science.	20	
Level 7 Certificate, Level 7 Diploma and Level 7 Degree in Secondary Education: Industrial Arts.	25	
Level 7 Certificate, Level 7 Diploma and Level 7 Degree in Secondary Education: Accounting, Economics, Computer Science, Technology.	15	
Level 7 Certificate, Level 7 Diploma and Level 7 Degree in Secondary Education: History, Geography.	10	
Level 7 Certificate, Level 7 Diploma and Level 7 Degree in Secondary Education: Biology, Chemistry, Home Economics, Food & Nutrition.	20	
Level 7 Certificate, Level 7 Diploma and Level 7 Degree in Secondary Education: English Language & Literature, Hindi Language & Indian Culture, i-Taukei Studies, i-Taukei/Fijian Language, Literature & Language, Hindi Studies, English.	20	
Level 7 Certificate, Level 7 Diploma and Level 7 Degree in Secondary Education: Physical Education & Music, Physical Education/Art & Craft	20	
Level 7 Certificate, Level 7 Diploma and Level 7 Degree in Secondary Education: Agriculture.	10	

Scheme Priority Disciplines and Programmes

Arts		
Programmes	Awards	Qualifying Cut-Off Mark
Level 7 Certificate, Level 7 Diploma and Level 7 Degree in: Language, Literature & Culture, Hindi Language & Indian Culture, i-Taukei Language, Hindi Language, Justice, Policing, Population Studies & Demography, Multilingual Studies, Media & Communication, Media Studies and Journalism, Police Management, Prosecution, History, Linguistic, Heritage and Arts, Politics, Geography, Non-Formal Education, Sports Education and Exercise Science.	30	(240 – 249) Marks or GPA of (2.70 – 2.80)/4.5 or (3.0 – 3.11)/5.0.

Tourism		
Programmes	Awards	Qualifying Cut-Off Mark
Level 7 Certificate, Level 7 Diploma and Level 7 Degree in: Tourism Studies, Hotel Management, Tourism & Hospitality, Tourism Hospitality Management, Tourism Management, Hospitality & Hotel Management.	30	(240 – 249) Marks or GPA of (2.70 – 2.80)/4.5 or (3.0 – 3.11)/5.0.

Scheme Eligible Tertiary Education Institutions

1. Corpus Christi Teachers College.
2. Fiji National University.
3. Fulton Adventist University College.
4. Sangam Institute of Technology.
5. The University of the South Pacific.
6. University of Fiji.



2.2.13. Scholarships for Skills Qualification based on Offer Letter Scheme (4500 Awards).

Scheme Eligibility Criteria

An applicant must:

1. be a Fiji citizen.
2. be ordinarily resident in Fiji for at least three (3) years before the award commencement date unless determined by the Service.
3. secure a final offer letter from an eligible institution for either Certificate Level III, IV and Diploma level 5 & 6 programmes.
4. not be an existing TSLS sponsored student or graduate (on active bond service) or sponsored through any other agency.
5. not have a combined parental income of more than \$150,000 or business net profit of more than \$20,000 unless allowed by means testing.

Scheme Priority Disciplines and Programmes

Discipline	Programmes	Award
Agriculture, Forestry & Fisheries	Agricultural Engineering, Horticulture, Agro Forestry, Animal Husbandry, Applied Fisheries, Aquaculture, Forestry, Wood Processing and Value Adding.	450
Hotel and Tourism	Baking & Patisserie, Cookery, Front Office Operations, Housekeeping & Accommodation Operations, Restaurant Services, Hospitality and Hotel Management, Culinary Art, Restaurant Operations, Tourism Studies, Food and Beverage, Kitchen Operations.	600
Business, Commerce & Retails Services	Customs, Outsourcing Operations, Office Administration and Retail Services.	450
Engineering Services	Fitting and Machining, Plant Maintenance Engineering, Fabrication and Welding, Aircraft Maintenance Engineering (Avionics), Aircraft Maintenance Engineering (Mechanical), Manufacturing Engineering, Civil Engineering, Renewable and Sustainable Engineering, Plant Engineering, Mechanical Engineering, Transport Technology and Management (Roads).	270

Scheme Priority Disciplines and Programmes

Discipline	Programmes	Award
Automotive and Heavy Plants	Automotive Body Works, Automotive Engineering, Automotive Engineering (Automotive Electrical and Electronics), Automotive Engineering Heavy Commercial Vehicle, Automotive Engineering Heavy Mobile Plant, Automotive Engineering Light Motor Vehicle, Automotive Engineering Panel and Paint, Automotive Mechanic.	650
Medical & Health Para-Professionals	Enrolled Nursing, Biomedical Engineering, Ageing and Community Support Care, Dental Assisting, Clinical Laboratory Technology, Community Nutrition.	150
Construction	Carpentry, Joinery and Cabinet Making, Plumbing and Sheetmetal, Quantity Surveying, Architectural Drafting.	630
Electrical	Electrical Engineering, Electronics Engineering, Refrigeration and Airconditioning, Fitting & Machining, Electronics/ Instrumentation & Control, Outdoor Powered Equipment.	320
Fashion and Beauty Therapy	Hairdressing, Beauty Therapy, Fashion.	120
Mining	Geology, Mining and Quarrying.	50
Information Technology Services	Programming, Software Development, Website Designing, Graphic Design Electronics/ Telecommunication & Networking, Structured Cabling and Networking, Library Services.	390
Creative Arts and Talents	Film & Television Production, Graphic Arts, Music, Sports Science.	60
Land/Town Planning	Land Surveying.	100
Science and Innovation	Marine Engineering and Nautical Science.	100
Education	Early Childhood Education, Counseling.	160

Scheme Eligible Tertiary Education Institutions

- Caregivers Training Institute Pte Limited.
- Centre for Applied Technology Development.
- Corpus Christi Teachers College.
- Fiji National University.
- Keshals Business Education Institute.
- Montfort Boys Town.
- Navuso Agricultural Technical Institute.
- Pacific Polytechnic Limited.
- Pivot Point.
- Service Pro.
- SPA Academy Fiji.
- The University of the South Pacific.
- Vishan Institute of Technology.
- Australian Pacific Management & Training Fiji.

2.2.14. Scholarships for Hardship Assistance Scheme (500 Awards)

Scheme Eligibility Criteria

An applicant must:

1. be a Fiji citizen.
2. be ordinarily resident in Fiji for at least three (3) years before the award commencement date unless determined by the Service.
3. have attempted year one (1) studies privately and have at least attained 50% pass rate in year one (1) or preceding year.
4. be enrolled for a Diploma Level 5 or Higher Education (Level 7) programmes at an eligible institution.
5. submit programme audit which confirms that you have attempted year one (1) studies as per full academic load requirement.
6. be enrolled as a full-time student on full academic load and not be engaged in any form of employment.
7. not be an existing TSLS sponsored student or graduate (on active bond service) or sponsored through any other agency.
8. not have a combined parental income of more than \$150,000 or business net profit of more than \$20,000 unless allowed by means testing.

Scheme Eligible Tertiary Education Institutions

1. Corpus Christi Teachers College.
2. Fiji National University.
3. Fulton Adventist University College.
4. Pivot Point.
5. Sangam Institute of Technology.
6. The University of the South Pacific.
7. University of Fiji.



2.3 STUDY LOAN

2.3.1. In-Service Study Loan Scheme (200 Study Loans).

Eligibility Criteria

An applicant must:

1. be a Fiji citizen.
2. be ordinarily resident in Fiji for at least three (3) years before the award commencement date unless determined by the Service.
3. be in employment/evidence of self-employment in business at the time of application and remain in employment during the course of studies unless on leave with or without pay.
4. be seeking to attain a first higher education academic qualification or upgrade an existing qualification (same area) only if the earlier qualification was not funded by TSLS up to first Bachelor's Degree.
5. provide a support letter from the employer on the need for employment demand for the intended qualification.
6. secure a place at an eligible institution by means of a final offer letter.
7. not be an existing TSLS sponsored student or graduate (on active bond service) or sponsored through any other agency.
8. be paid tuition only.

Scheme Priority Disciplines and Programmes

Discipline	Quota
Engineering Services	15
Medical & Health Services	20
Agriculture, Forestry & Fisheries	15
Information Technology Services	15
Social Works	10
Science and Innovation	20
Land/Town Planning	10
Business and Commerce	30
Education	30
Arts	25
Hotel and Tourism	10

Scheme Eligible Tertiary Education Institutions

1. Corpus Christi Teachers College.
2. Fiji National University.
3. Fulton Adventist University College.
4. Sangam Institute of Technology.
5. The University of the South Pacific.
6. University of Fiji.



2.4 SCHOLARSHIP SCHEMES PRIVILEGES

Scholarships for Masters & PhD by Research Scheme

1. Tuition Fee.
2. General Service Fee.
3. Visa Fees up to \$3000 FJD.
4. Living allowance at a maximum rate of \$23,000 for a Masters student and \$26,000 for a PhD student per year at a local university.
5. Living allowance at a maximum rate of \$47,000 FJD for a Masters student and \$50,000 FJD for a PhD student per year at an eligible New Zealand university.
6. Dependent's allowance (legally married spouse and children if not working) of \$10,000 per year at a local university.
7. Economy Class Yearly return airfare for a Masters and PhD student at an eligible New Zealand University.
8. Overseas student health cover fee for sponsored student only.
9. Establishment allowance (one off payment at the beginning of the programme) at maximum rate of NZD \$3500 at an eligible New Zealand University.
10. Excess baggage allowance at a maximum rate of NZD \$300.
11. Field grant – only if the student is required and approved to undertake field surveys for primary data collection, up to \$2,500 at a local university and FJD \$5,200 at an eligible New Zealand university.

The Service may review the scholarship privileges and may make such changes as needed.

Cost Sharing Overseas PhD Scholarship Scheme with Australian Universities

1. Living allowance at a minimum AUD of \$32,000 or at a local market rate.
2. Economy Class Yearly return airfare.
3. Visa Fees up to \$3000 FJD.
4. Overseas student health cover fee for sponsored student only.
5. Establishment allowance (one off payment at the beginning of the programme) at maximum rate of AUD \$3500.
6. Excess baggage allowance at a maximum rate of AUD \$300.
7. Field grant – only if the student is required and approved to undertake field surveys for primary data collection, up to AUD \$3,000.
8. The Service may review the scholarship privileges and may make such changes as needed.

The Service may review the scholarship privileges and may make such changes as needed.

Scholarship for Postgraduate Diploma In-Service Overseas Scheme, Scholarship for High Achievers Higher Education (Level 7) Overseas Scheme & Scholarship for High Achievers (Skills Qualification) Overseas Scheme

1. Tuition Fee.
2. General Service Fee.
3. Visa Fees up to \$3000 FJD.
4. Economy Class airfare at commencement and return fare after Completion/ Graduation). Additionally, One Return Trip on Completion of 50% of Studies.
5. Living allowance at a maximum rate of AUD or NZD \$38,400.
6. Overseas student health cover fee for sponsored student only.
7. Establishment allowance (one off payment at the beginning of the programme) at maximum rate of AUD or NZD \$3500.
8. Excess baggage allowance at a maximum rate of AUD or NZD \$300.

The Service may review the scholarship privileges and may make such changes as needed.

Scholarship for High Achievers Higher Education (Level 7) Local Scheme and Scholarship for High Achievers (Skills Qualifications) Local Scheme.

1. Tuition Fee.
2. General Service Fee.
3. Allowance of \$3,800 per semester and pro-rata for quarter and trimester.

The Service may review the scholarship privileges and may make such changes as needed.

Scholarships for Students with Special Needs Higher Education (Level 7) Scheme and Scholarships for Students with Special Needs (Skills Qualification) Scheme.

1. Tuition Fee.
2. General Service Fee.
3. Allowance of \$4,300 per semester and pro-rata for quarter and trimester.

The Service may review the scholarship privileges and may make such changes as needed.

Scholarships for In-Service Public Sector Scheme

1. Tuition Fee.
2. General Service Fee.

The Service may review the scholarship privileges and may make such changes as needed.

Scholarships for Higher Education (Level 7) With Minimum Cut Off Mark Scheme, Scholarships for Equity Based Higher Education (Level 7) With Minimum Cut Off Mark Scheme and Scholarships for Skills Qualification based on Offer Letter Scheme

1. Tuition Fee with option for cost sharing with incentivized bond service.
2. Allowance of \$2800 per semester and pro-rata for quarter and trimester for Away campus.
3. Allowance of \$1600 per semester and pro-rata for quarter and trimester for Home campus.

The Service may review the scholarship privileges and may make such changes as needed.

Scholarships for Hardship Assistance Scheme

1. Tuition Fee.
2. Allowance of \$2000 per annum.

The Service may review the scholarship privileges and may make such changes as needed.

In-Service Study Loan Scheme

1. Tuition Fee.

The Service may review the study loan privilege and may make such changes as needed.

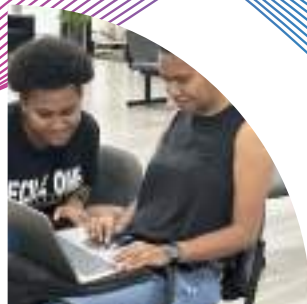
Equity Based Allowance

Equity Based Allowance will assist students whose both parents are deceased and are either taken care by legal guardians or staying in home care.

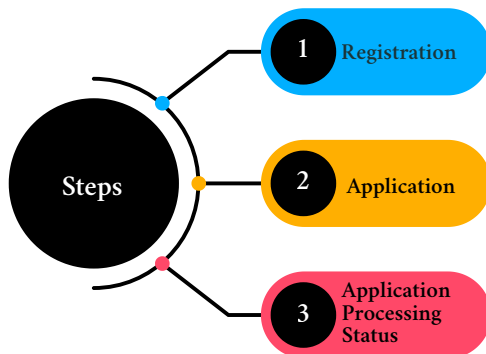
Students who meet the eligibility criteria will be paid an additional allowance of \$1,000.00 under Higher Education (Level 7) with minimum Cut-Off Mark Scheme and Skills Qualification Based on Offer Letter Scheme.

Know How To Apply

- TSLs Online Application Requirements
- Information on TSLs Online Registration & Application For Scholarships
- Account Creation Flowchart
- Online Application Processing Flowchart



TSLS Online Application Requirements



Step 1: Registration

1. Visit www.tsls.com.fj and click on the “Apply Online” button.
2. Click on the “Register” button to create your TSLS Apply Account using a valid email address (Gmail, Yahoo or Hotmail).
3. Applicants must use their own email address for the purpose of the application.
4. Once successfully registered, log in to your email to verify and activate your My TSLS Apply Account.

Step 2: Application

1. Login to commence with your application.
2. Select My Account to update your personal details.
3. View Programs to select your eligible scheme and click Apply.
4. Update and complete task with required documents. Upon completion of each task, you must click “Mark as Complete” to move to the next task.
5. Accept Declaration to “Submit” your application successfully.
6. You can edit any task prior to application submission.

Step 3: Application Processing Status

1. Log in and Click on “My Application” for the status and progress of your application.
2. Once the application is successfully submitted, the application status will change to “Processing”.
3. All applications must be successfully submitted before the application closing date.
4. Late and incomplete applications will not be considered for assessment.

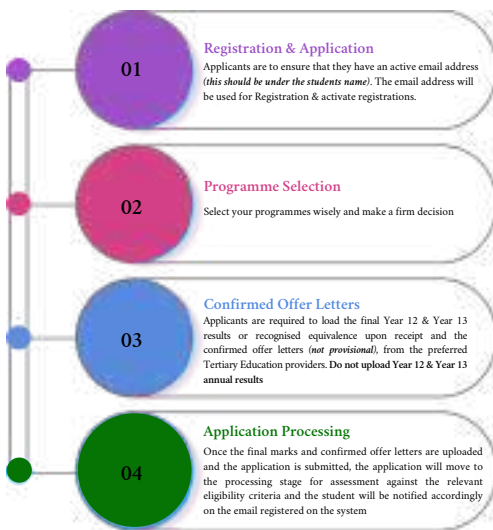
Scan and get all the required documents ready before starting the process of applying online in the pdf, png, or jpg format. File size should not exceed 5MB.

For any issues with the online application, applicants can email on it@tsls.com.fj. Applicants can also use our live chat facility from 8.00am to 4.30pm Mondays to Thursdays and from 8.00am to 4.00pm on Fridays or email us on mytsls@tsls.com.fj.

Visit our website www.tsls.com.fj for specific information on the eligibility criteria and the quota balances for various schemes.

Provision of False Information is a serious offence under the False Information Act 2016.

Information on TSLs Online Registration & Application For Scholarships

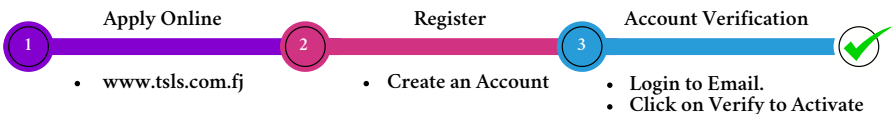


Upon account creation, applicants must proceed to complete personal details and will require applicants to complete study period, programme and Tertiary Education provider choices with final offer letters, upload bank account/ mobile wallet details, highest educational attainment and income details.

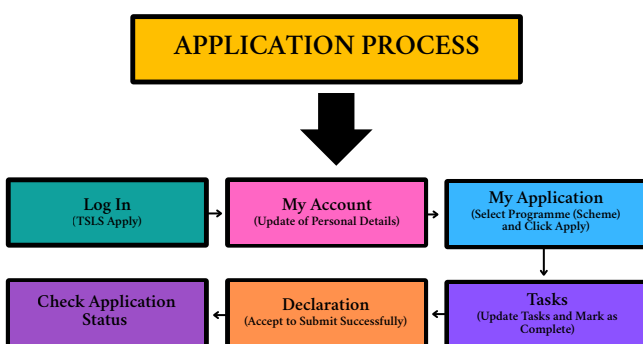
Once the application is successfully completed and submitted, the application will move to the processing stage for assessment against the relevant eligibility criteria and the student will be notified accordingly on the email registered on the system.

The application outcome or any notifications pertaining to the application will be notified accordingly on the email registered during the registration.

Account Creation Flowchart



Online Application Processing Flowchart



SCAN THE
QR
TO APPLY

Allowance Details

- Changes to Allowance Rates
- Equity Based Allowance



Changes to Allowance Rates

The Tertiary Scholarships and Loans Service (TSLs) wishes to advise existing sponsored students on the changes to the allowance rates in accordance with the 2025-2026 National Budget announcement. Upon the Parliamentary approval of the Budget, the effective date will be from 1st August 2025.

The revised allowance rates are as follows:

Current Name	Apply to	New Yearly Rate	Semester Rate	Trimester Rate	Quarter Rate
Merit Based Higher Education – Level 7 Local Scheme	All Students on Scheme	\$7,600	\$3,800	\$2,533.33	\$1,900
Merit Based Skills Qualification Local Scheme		\$7,600	\$3,800	\$2,533.33	\$1,900
Students with Special Needs Higher Education Scheme		\$8,600	\$4,300	\$2,866.67	\$2,150
Higher Education (Level 7) with minimum Cut-Off Mark Scheme	Away Campus	\$5,600	\$2,800	\$1,866.67	\$1,400
Higher Education (Level 7) with minimum Cut-Off Mark Scheme	Home Campus	\$3,200	\$1,600	\$1,066.67	\$800
Skills Qualification Based on Offer Letter Scheme	Away Campus	\$5,600	\$2,800	\$1,866.67	\$1,400
Skills Qualification Based on Offer Letter Scheme	Home Campus	\$3,200	\$1,600	\$1,066.67	\$800



Equity Based Allowance

Equity Based Allowance are for Students sponsored on following Schemes:

1. Scholarships for Higher Education (Level 7 - Degree) with Minimum cut off Mark Scheme.
2. Scholarships for Skills Qualification Based on Offer Letter Scheme.

Details on Equity Based Allowance:

1. Equity Based Allowance has been introduced in 2025-2026 Budget to ensure that students from low socioeconomic backgrounds are not disadvantaged.
2. Students whose both parents are deceased and are either taken care by legal guardians or staying at a Care Giving Home can apply for assistance under this initiative.
3. Students who meet the eligibility criteria will be paid an additional allowance of \$1,000.00. This is to ensure that they are not financially disadvantaged and are provided with equal opportunity and resources as other students.
4. The Equity Based Allowance is applicable to two schemes and allowance rates will be as follows:

Scheme	Apply to	Current Approved Rates	Additional Equity Based Allowance	Total Equity Based Allowance
Higher Education (Level 7) with minimum Cut-Off Mark Scheme	Away Campus	\$5,600 per annum	\$1,000 per annum	\$6,600 per annum
Skills Qualification Based on Offer Letter Scheme	Home Campus	\$3,200 per annum	\$1,000 per annum	\$4,200 per annum

5. The Equity Based Allowance rates for each academic term are as follows:

Scheme	Apply to	New Yearly Rate	Semester Rate	Trimester Rate	Quarter Rate
Higher Education (Level 7) with minimum Cut-Off Mark Scheme	Away Campus	\$6,600	\$3,300	\$2,200.00	\$1,650
Skills Qualification Based on Offer Letter Scheme	Home Campus	\$4,200	\$2,100	\$1,400.00	\$1,050

Documents Requirements:

1. Parents Death Certificate
2. Letter of Guardianship (Adoption Order) if staying with Legal Guardian.
3. Letter of Confirmation from Care Facility if staying in and supported by a Care Giving Home.

Applicants to use Form TSLS 01 should they wish to apply for Equity Based Allowances.



SCAN THE QR TO
DOWNLOAD THE FORM

Travel & Bond Clearance

- Purpose and Overview
- User Guideline QR

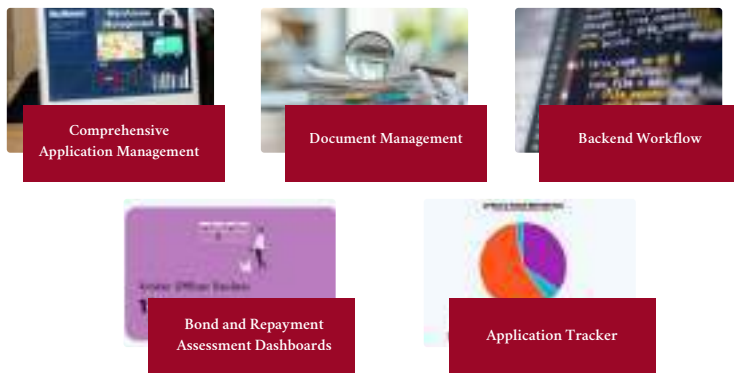


Purpose and Overview

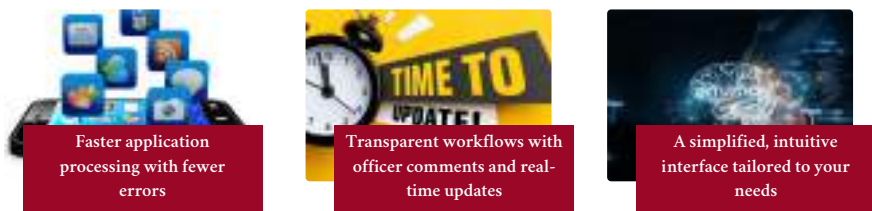
The TSLs Travel and Bond Clearance Portal is a web-based application which streamlines the process for students/graduates and guarantors to apply for travel release, full bond clearance, and/or repayment in lieu of bond service. By automating workflows and providing real-time updates, the portal ensures a seamless and efficient application experience with everything offered in single place.

The platform eliminates paperwork, reduces administrative bottlenecks and provides a transparent and user-friendly experience. With the automated workflows and role-specific functionalities, the portal bridges the gap between applicants and approving authorities, offering a seamless digital environment for managing applications.

Key Features



You Will Experience



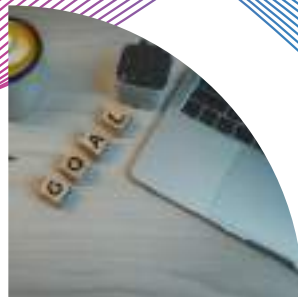
SCAN THE
QR
TO APPLY



SCAN THE
QR TO VIEW THE
GUIDE

Learning Enrichment Management System

- Purpose and Overview
- Industry Mentoring

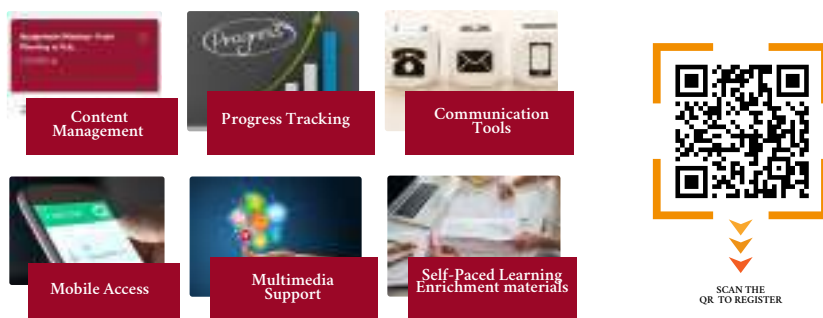


Purpose and Overview

The TSLS Learning Enrichment Management System (LEMS) is a centralized digital platform designed to simplify access to learning resources and enhance the educational experience for sponsored students. The LEMS provides a seamless environment for students to access course materials, participate in discussions, submit assignments, and track their progress. With interactive tools and automated workflows, the platform ensures efficiency, user-friendliness, and improved engagement between learners and educators.

In addition to supporting scholarship students TSLS is offering both self-paced and instructor-led courses, the LEMS plays a key role in fostering education and skill development across Fiji, making TSLS a leader in digital learning initiatives.

Key Features



The following are some of the services provided by TSLS Learning Enrichment:

- 01 Weekly Learning Enrichment Sessions
- 02 At Risk Students Assistance
- 03 Confidential Personal Counseling
- 04 On-Campus Visits to meet sponsored students
- 05 Zoom sessions available after class and weekends

Industry Mentoring is also available where TSLS organizes Industry mentoring sessions in field areas such as Education, Engineering, Accounting amongst others. This is a platform that allows students to hear from the industry experts on requirements of the industry post-graduation.

If you or anyone you know is a TSLS sponsored student and is struggling, please contact the TSLS Learning support team today!

Upgraded Alumni & Employer Connect

- Purpose and Overview



Purpose and Overview

This portal is designed to serve as a vital platform aimed at strengthening the connection between scholarship recipients, alumni, and employers in Fiji.

By providing a centralized hub for job opportunities and professional networking, the portal ensures that TSLS-funded graduates can seamlessly transition into the workforce.

It not only helps jobseekers find employment that matches their skills and qualifications but also enables employers to access talented and highly educated candidates.

The platform also fosters career growth and mentorship opportunities, allowing alumni to engage with recent graduates, share industry insights, and contribute to the development of Fiji's workforce.

Ultimately, this initiative supports the nation's goal of building a skilled and employable workforce, ensuring that TSLS graduates make meaningful contributions to society and the economy.

Key Features



SCAN THE QR
TO SIGN UP



SCAN THE QR TO
VIEW THE GUIDE

Contact Us

1.Face to Face through our Offices located as follows:

- Level 1, Unit 36-37, Garden City Complex, Raiwai.
- 3rd Floor, Labasa Tikina House.
- Ground Floor, Rogorogoivuda House, Lautoka.
- Airport Central Building, Ground Floor Unit 8, Namaka, Nadi.



2. Live chat facility from 8.00am to 4.30pm Mondays to Thursdays and from 8.00am to 4.00pm on Fridays via www.tsls.com.fj.

3.Email us on mytsls@tsls.com.fj.

4.Call us on 8921240.



Tertiary **Scholarships**
& **Loans** Service

Empowering Fiji's Future



Tertiary **Scholarships**
& **Loans** Service

Empowering Fiji's Future